
**ACI Racing Weekend Imola, 22-23 Aprile 2023**
**TCR Italy - Classifica Prove Libere 2**

Imola Circuit 4.909 m

1 / 2

Num.	Conduttore	Naz	Concorrente	Team	Auto	Classe	Tempo	Dist.	Rel.	Giri
1	<b>72 GIROLAMI</b> Franco	ARG	Aikoa Racing	Aikoa Racing (ITA)	Audi RS3 LMS		<b>1'50.716</b>			10
2	<b>14 JELMINI</b> Felice	ITA	Jelmini Felice	PMA	Audi RS3 LMS		<b>1'51.474</b>	0.758	0.758	12
3	<b>23 VAHTEL</b> Mattias	EST	ALM Motorsport	ALM Motorsport (EST)	Honda Civic FK7 H70	U25	<b>1'51.616</b>	0.900	0.142	14
4	<b>18 BUTTI</b> Marco	ITA	Target Competition	Target Competition (ITA)	Hyundai Elantra N	U25	<b>1'51.684</b>	0.968	0.068	10
5	<b>5 POLONI</b> Matteo	ITA	Poloni Matteo		Audi RS3 LMS		<b>1'51.692</b>	0.976	0.008	11
6	<b>1 LANGEVELD</b> Niels	NLD	MM Motorsport	MM Motorsport (ITA)	Honda Civic FL5		<b>1'52.017</b>	1.301	0.325	9
7	<b>9 PARK</b> Junul	KOR	Solite Indigo Racing	Target Competition (ITA)	Hyundai Elantra N	U25	<b>1'52.164</b>	1.448	0.147	12
8	<b>12 FERNANDEZ</b> Ruben	ESP	Auto Club RC2 Valles	Auto Club RC2 Valles (ESP)	Audi RS3 LMS	MA	<b>1'52.375</b>	1.659	0.211	13
9	<b>27 VOLT</b> Ruben	EST	ALM Motorsport	ALM Motorsport (EST)	Honda Civic FK7 H70	U25	<b>1'52.388</b>	1.672	0.013	14
10	<b>76 COMTE</b> Aurelien	FRA	Comte Aurelien	SP Competition (FRA)	Cupra Leon Competicion		<b>1'52.561</b>	1.845	0.173	12
11	<b>8 BABUIN</b> Denis	ITA	Babuini Denis		Audi RS3 LMS	MA	<b>1'52.797</b>	2.081	0.236	13
12	<b>67 PELLEGRINI</b> Marco	ITA	Pellegrini Marco	Pinetti Motorsport (ITA)	Audi RS3 LMS	MA	<b>1'52.862</b>	2.146	0.065	13
13	<b>19 FERNANDEZ</b> Felipe	ESP	Auto Club RC2 Valles	Auto Club RC2 Valles (ESP)	Audi RS3 LMS		<b>1'53.029</b>	2.313	0.167	12
14	<b>69 RAFFAELE</b> Francesca	ITA	Raffaele Francesca	Aikoa Racing (ITA)	Audi RS3 LMS	U25	<b>1'53.107</b>	2.391	0.078	12
15	<b>64 LOSONCZY</b> Levente	HUN	Aggressive Team Italia	Aggressive Team Italia (ITA)	Hyundai Elantra N	U25	<b>1'53.181</b>	2.465	0.074	12
16	<b>77 PUSSIER</b> Sylvain	FRA	Pussier Sylvain	SP Competition (FRA)	Cupra Leon Competicion	MA	<b>1'53.433</b>	2.717	0.252	12
17	<b>44 IMBERTI</b> Michele	ITA	Imberti Michele		Hyundai i30 N		<b>1'53.456</b>	2.740	0.023	10
18	<b>25 ROCCA</b> Paolo	ITA	Rocca Paolo	MM Motorsport (ITA)	Honda Civic FK7 H70	U25	<b>1'53.538</b>	2.822	0.082	11
19	<b>30 BARBERINI</b> Cosimo	ITA	Barberini Cosimo	NOS (ITA)	Cupra Leon Competicion		<b>1'53.589</b>	2.873	0.051	12
20	<b>4 GURRIERI</b> Raffaele	ITA	Gurrieri Raffaele		Cupra Leon	MA	<b>1'53.752</b>	3.036	0.163	10
21	<b>40 ANTTI</b> Rammo	EST	ALM Motorsport	ALM Motorsport (EST)	Honda Civic FK7 H70		<b>1'53.967</b>	3.251	0.215	13
22	<b>2 MASSARO</b> Rodolfo	ITA	Target Competition	Target Competition (ITA)	Hyundai Elantra N		<b>1'54.000</b>	3.284	0.033	12
23	<b>37 LOPEZ BOLOTIN</b> Sergio	VEN	Auto Club RC2 Valles	Auto Club RC2 Valles (ESP)	Audi RS3 LMS		<b>1'54.382</b>	3.666	0.382	13
24	<b>11 REDUZZI</b> Damiano	ITA	Reduzzi Damiano	Trico WRT (ITA)	Hyundai Elantra N	MA	<b>1'54.450</b>	3.734	0.068	12
25	<b>10 PAOLINO</b> Federico	ITA	Paolino Federico		Audi RS3 LMS		<b>1'54.466</b>	3.750	0.016	11
26	<b>34 SCAMARDI</b> Giovanni	BEL	Aggressive Team Italia	Aggressive Team Italia (ITA)	Hyundai Elantra N		<b>1'54.938</b>	4.222	0.472	13
27	<b>13 VISDOMINI</b> Adriano	ITA	Visdomini Adriano		Hyundai i30 N	MA	<b>1'55.150</b>	4.434	0.212	13
28	<b>21 GUIDA</b> Nicola	ITA	Guida Nicola		Audi RS3 LMS	MA	<b>1'55.339</b>	4.623	0.189	11
29	<b>16 CARTIA</b> Giuseppe	ITA	Cartia Giuseppe	Trico WRT (ITA)	Hyundai i30 N	U25	<b>1'56.168</b>	5.452	0.829	9
30	<b>96 PALANTI</b> Paolo	ITA	Aikoa Racing	Aikoa Racing (ITA)	Audi RS3 DSG		<b>1'56.276</b>	5.560	0.108	10
31	<b>92 FEDELI</b> Carlotta	ITA	Fedeli Carlotta	RC Motorsport (ITA)	Audi TCR DSG		<b>1'56.627</b>	5.911	0.351	11
32	<b>48 NATALONI</b> Nello	ITA	Nataloni Nello		Audi RS3 LMS		<b>1'57.048</b>	6.332	0.421	14
33	<b>41 FERNANDEZ</b> Vector	ESP	Auto Club RC2 Valles	Auto Club RC2 Valles (ESP)	Audi RS3 LMS	MA	<b>1'57.078</b>	6.362	0.030	12
34	<b>90 TRENTIN</b> Mauro	ITA	Trentin Mauro		Cupra Leon		<b>1'57.537</b>	6.821	0.459	13
35	<b>88 GALLO</b> Luigi	ITA	Gallo Luigi	RC Motorsport (ITA)	Audi RS3 DSG		<b>1'57.667</b>	6.951	0.130	8
36	<b>81 DALOKAY</b> Vedat Ali	TUR	Bitci Racing Team AMS	Bitci Racing Team AMS (TUR)	Audi RS3 DSG		<b>1'57.797</b>	7.081	0.130	11
37	<b>33 CHIRIGUT</b> Horia-Traian	ROU	MM Motorsport	MM Motorsport (ITA)	Honda Civic FK7 H70	MA	<b>1'57.799</b>	7.083	0.002	9
38	<b>80 BARBERI</b> Filippo	ITA	Aikoa Racing	Aikoa Racing (ITA)	Audi RS3 DSG		<b>1'57.813</b>	7.097	0.014	12
39	<b>89 LOIA</b> Niccolò	ITA	Loia Niccolò	NOS (ITA)	Volkswagen Golf		<b>1'58.466</b>	7.750	0.653	13
40	<b>73 MANOLIO</b> Gennaro	ITA	Manolio Gennaro		Hyundai i30 N		<b>1'58.592</b>	7.876	0.126	12
41	<b>91 CIOFFI-CIOFFI</b>	ITA	Cioffi Alberto	Abate Cars Technology	Volkswagen Golf		<b>2'00.952</b>	10.236	2.360	12
42	<b>99 DE VECCHI</b> Stefano	ITA	Aikoa Racing	Aikoa Racing (ITA)	Audi RS3 DSG		<b>2'06.458</b>	15.742	5.506	10
43	<b>86 FANTILLI</b> Giorgio	ITA	Fantilli Giorgio		Cupra Leon					0

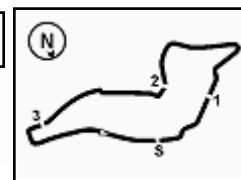
Umidità	59%	ARIA	20°C
Condizioni	DRY	Pista	32°C

Direttore di Gara : Massimiliano Ghinassi

Direttore di Prova : Gianluca Marotta

	Inizio	Fine
21/04/2023	14:29	15:02

Esposta alle: .....


**ACI Racing Weekend Imola, 22-23 Aprile 2023**
**TCR Italy - Classifica Prove Libere 2**
**Penalty and Infringement**

14.35	12	R. FERNANDEZ	Time Deleted (2'21.815) - Exceeded Track Limits - Turn 10
14.37	44	M. IMBERTI	Time Deleted (2'13.759) - Exceeded Track Limits - Turn 10
14.37	23	M. VAHTEL	Time Deleted (1'54.409) - Exceeded Track Limits - Turn 15
14.39	2	R. MASSARO	Time Deleted (2'15.690) - Exceeded Track Limits - Turn 14
14.40	27	R. VOLT	Time Deleted (1'53.698) - Exceeded Track Limits - Turn 10
14.40	37	S. LOPEZ BOLOTIN	Time Deleted (1'53.633) - Exceeded Track Limits - Turn 10
14.40	34	G. SCAMARDI	Time Deleted (1'55.748) - Exceeded Track Limits - Turn 10
14.40	64	L. LOSONCZY	Time Deleted (1'53.267) - Exceeded Track Limits - Turn 14
14.40	80	F. BARBERI	Time Deleted (2'02.663) - Exceeded Track Limits - Turn 10
14.41	89	N. LOIA	Time Deleted (1'58.465) - Exceeded Track Limits - Turn 13
14.43	13	A. VISDOMINI	Time Deleted (3'47.288) - Exceeded Track Limits - Turn 15
14.43	72	F. GIROLAMI	Time Deleted (1'50.976) - Exceeded Track Limits - Turn 15
14.44	67	M. PELLEGRINI	Time Deleted (1'52.852) - Exceeded Track Limits - Turn 10
14.45	30	C. BARBERINI	Time Deleted (3'01.694) - Exceeded Track Limits - Turn 10
14.46	2	R. MASSARO	Time Deleted (1'54.114) - Exceeded Track Limits - Turn 14
14.46	14	F. JELMINI	Time Deleted (3'40.799) - Exceeded Track Limits - Turn 15
14.46	4	R. GURRIERI	Time Deleted (1'53.793) - Exceeded Track Limits - Turn 10
14.47	89	N. LOIA	Current Lap Deleted - Exceeded Track Limits - Turn 10
14.47	23	M. VAHTEL	Time Deleted (2'15.476) - Exceeded Track Limits - Turn 10
14.47	64	L. LOSONCZY	Time Deleted (1'53.380) - Exceeded Track Limits - Turn 10
14.47	89	N. LOIA	Current Lap Deleted - Exceeded Track Limits - Turn 10
14.47	2	R. MASSARO	Time Deleted (1'55.271) - Exceeded Track Limits - Turn 10
14.47	30	C. BARBERINI	Time Deleted (1'53.864) - Exceeded Track Limits - Turn 10
14.47	40	R. ANTTI	Time Deleted (2'18.188) - Exceeded Track Limits - Turn 14
14.47	34	G. SCAMARDI	Time Deleted (1'55.317) - Exceeded Track Limits - Turn 10
14.48	13	A. VISDOMINI	Time Deleted (1'56.074) - Exceeded Track Limits - Turn 10
14.49	40	R. ANTTI	Time Deleted (1'54.430) - Exceeded Track Limits - Turn 14
14.51	37	S. LOPEZ BOLOTIN	Time Deleted (1'54.201) - Exceeded Track Limits - Turn 10
14.51	34	G. SCAMARDI	Time Deleted (1'54.965) - Exceeded Track Limits - Turn 10
14.51	2	R. MASSARO	Time Deleted (1'54.125) - Exceeded Track Limits - Turn 14
14.57	2	R. MASSARO	Time Deleted (2'29.916) - Exceeded Track Limits - Turn 14
14.58	27	R. VOLT	Time Deleted (1'54.511) - Exceeded Track Limits - Turn 10
14.58	23	M. VAHTEL	Time Deleted (1'51.877) - Exceeded Track Limits - Turn 14
14.59	19	F. FERNANDEZ	Time Deleted (1'55.996) - Exceeded Track Limits - Turn 15
15.00	44	M. IMBERTI	Time Deleted (1'53.386) - Exceeded Track Limits - Turn 10

**Fastest Laps Sequence**

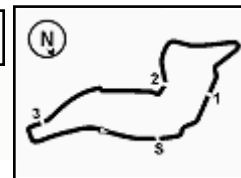
Num.	Concorrente	Naz	Team	Auto	Local Time	Tempo	Dist.	Media
2	R. MASSARO	ITA	Target Competition	Hyundai Elantra N	14:34'15.468	<b>1'55.316</b>		153,252
2	R. MASSARO	ITA	Target Competition	Hyundai Elantra N	14:36'09.859	<b>1'54.391</b>	-0.925	154,491
18	M. BUTTI	ITA	Target Competition	Hyundai Elantra N	14:36'30.743	<b>1'52.433</b>	-1.958	157,182
9	J. PARK	KOR	Target Competition	Hyundai Elantra N	14:38'28.647	<b>1'52.419</b>	-0.014	157,201
23	M. VAHTEL	EST	ALM Motorsport	Honda Civic FK7 H70	14:38'34.198	<b>1'52.189</b>	-0.230	157,523
72	F. GIROLAMI	ARG	Aikoa Racing	Audi RS3 LMS	14:39'30.739	<b>1'51.345</b>	-0.844	158,717
72	F. GIROLAMI	ARG	Aikoa Racing	Audi RS3 LMS	14:51'23.370	<b>1'50.716</b>	-0.629	159,619

Direttore di Gara : Massimiliano Ghinassi

Direttore di Prova : Gianluca Marotta

 Inizio 21/04/2023 14:29  
 Fine 15:02

Esposta alle: .....


**ACI Racing Weekend Imola, 22-23 Aprile 2023**
**TCR Italy - Classifica di Classe Prove Libere 2**

Imola Circuit 4.909 m

**Classe TCR DSG**

Num. Conduttore	Naz	Concorrente	Team	Auto	Tempo	Dist.	Rel.	Giri		
1	96	PALANTI Paolo	ITA	Aikoa Racing	Aikoa Racing (ITA)	Audi RS3 DSG	<b>1'56.276</b>		10	
2	92	FEDELI Carlotta	ITA	Fedeli Carlotta		Audi TCR DSG	<b>1'56.627</b>	0.351	0.351	11
3	90	TRENTIN Mauro	ITA	Trentin Mauro		Cupra Leon	<b>1'57.537</b>	1.261	0.910	13
4	88	GALLO Luigi	ITA	Gallo Luigi		Audi RS3 DSG	<b>1'57.667</b>	1.391	0.130	8
5	81	DALOKAY Vedat Ali	TUR	Bitci Racing Team AMS	Bitci Racing Team AMS (TUR)	Audi RS3 DSG	<b>1'57.797</b>	1.521	0.130	11
6	80	BARBERI Filippo	ITA	Aikoa Racing	Aikoa Racing (ITA)	Audi RS3 DSG	<b>1'57.813</b>	1.537	0.016	12
7	89	LOIA Niccolò	ITA	Loia Niccolò		Volkswagen Golf	<b>1'58.466</b>	2.190	0.653	13
8	91	CIOFFI-CIOFFI	ITA	Cioffi Alberto	Abate Cars Technology	Volkswagen Golf	<b>2'00.952</b>	4.676	2.486	12
9	99	DE VECCHI Stefano	ITA	Aikoa Racing	Aikoa Racing (ITA)	Audi RS3 DSG	<b>2'06.458</b>	10.182	5.506	10
10	86	FANTILLI Giorgio	ITA	Fantilli Giorgio		Cupra Leon				0

**Classe TCR**

Num. Conduttore	Naz	Concorrente	Team	Auto	Tempo	Dist.	Rel.	Giri		
1	72	GIROLAMI Franco	ARG	Aikoa Racing	Aikoa Racing (ITA)	Audi RS3 LMS	<b>1'50.716</b>		10	
2	14	JELMINI Felice	ITA	Jelmini Felice		Audi RS3 LMS	<b>1'51.474</b>	0.758	12	
3	23	VAHTEL Mattias	EST	ALM Motorsport	ALM Motorsport (EST)	Honda Civic FK7 H70	<b>1'51.616</b>	0.142	14	
4	18	BUTTI Marco	ITA	Target Competition	Target Competition (ITA)	Hyundai Elantra N	<b>1'51.684</b>	0.068	10	
5	5	POLONI Matteo	ITA	Poloni Matteo		Audi RS3 LMS	<b>1'51.692</b>	0.008	11	
6	1	LANGEVELD Niels	NLD	MM Motorsport	MM Motorsport (ITA)	Honda Civic FL5	<b>1'52.017</b>	0.325	9	
7	9	PARK Junul	KOR	Solite Indigo Racing	Target Competition (ITA)	Hyundai Elantra N	<b>1'52.164</b>	0.147	12	
8	12	FERNANDEZ Ruben	ESP	Auto Club RC2 Valles	Auto Club RC2 Valles (ESP)	Audi RS3 LMS	<b>1'52.375</b>	0.211	13	
9	27	VOLT Ruben	EST	ALM Motorsport	ALM Motorsport (EST)	Honda Civic FK7 H70	<b>1'52.388</b>	0.013	14	
10	76	COMTE Aurelien	FRA	Comte Aurelien	SP Competition (FRA)	Cupra Leon Competicion	<b>1'52.561</b>	0.173	12	
11	8	BABUIN Denis	ITA	Babuini Denis		Audi RS3 LMS	<b>1'52.797</b>	0.236	13	
12	67	PELLEGRINI Marco	ITA	Pellegrini Marco	Pinetti Motorsport (ITA)	Audi RS3 LMS	<b>1'52.862</b>	0.065	13	
13	19	FERNANDEZ Felipe	ESP	Auto Club RC2 Valles	Auto Club RC2 Valles (ESP)	Audi RS3 LMS	<b>1'53.029</b>	0.167	12	
14	69	RAFFAELE Francesca	ITA	Raffaele Francesca	Aikoa Racing (ITA)	Audi RS3 LMS	<b>1'53.107</b>	0.078	12	
15	64	LOSONCZY Levente	HUN	Aggressive Team Italia	Aggressive Team Italia (ITA)	Hyundai Elantra N	<b>1'53.181</b>	0.074	12	
16	77	PUSSIER Sylvain	FRA	Pussier Sylvain	SP Competition (FRA)	Cupra Leon Competicion	<b>1'53.433</b>	0.252	12	
17	44	IMBERTI Michele	ITA	Imberti Michele		Hyundai i30 N	<b>1'53.456</b>	0.023	10	
18	25	ROCCA Paolo	ITA	Rocca Paolo	MM Motorsport (ITA)	Honda Civic FK7 H70	<b>1'53.538</b>	0.082	11	
19	30	BARBERINI Cosimo	ITA	Barberini Cosimo		Cupra Leon Competicion	<b>1'53.589</b>	0.051	12	
20	4	GURRIERI Raffaele	ITA	Gurreri Raffaele		Cupra Leon	<b>1'53.752</b>	0.163	10	
21	40	ANTTI Rammo	EST	ALM Motorsport	ALM Motorsport (EST)	Honda Civic FK7 H70	<b>1'53.967</b>	0.215	13	
22	2	MASSARO Rodolfo	ITA	Target Competition	Target Competition (ITA)	Hyundai Elantra N	<b>1'54.000</b>	0.033	12	
23	37	LOPEZ BOLOTIN Sergio	VEN	Auto Club RC2 Valles	Auto Club RC2 Valles (ESP)	Audi RS3 LMS	<b>1'54.382</b>	0.382	13	
24	11	REDUZZI Damiano	ITA	Reduzzi Damiano	Trico WRT (ITA)	Hyundai Elantra N	<b>1'54.450</b>	0.068	12	
25	10	PAOLINO Federico	ITA	Paolino Federico		Audi RS3 LMS	<b>1'54.466</b>	0.016	11	
26	34	'SCAMA 34'	BEL	Aggressive Team Italia	Aggressive Team Italia (ITA)	Hyundai Elantra N	<b>1'54.938</b>	0.472	13	
27	13	VISDOMINI Adriano	ITA	Visdomini Adriano		Audi RS3 LMS	<b>1'55.150</b>	0.212	13	
28	21	GUIDA Nicola	ITA	Guida Nicola		Audi RS3 LMS	<b>1'55.339</b>	0.189	11	
29	16	CARTIA Giuseppe	ITA	Cartia Giuseppe	Trico WRT (ITA)	Hyundai i30 N	<b>1'56.168</b>	0.829	9	
30	48	NATALONI Nello	ITA	Nataloni Nello		Audi RS3 LMS	<b>1'57.048</b>	0.772	0.880	14
31	41	FERNANDEZ Vector	ESP	Auto Club RC2 Valles	Auto Club RC2 Valles (ESP)	Audi RS3 LMS	<b>1'57.078</b>	0.802	0.030	12
32	33	CHIRIGUT Horia-Traian	ROU	MM Motorsport	MM Motorsport (ITA)	Honda Civic FK7 H70	<b>1'57.799</b>	1.523	0.721	9
33	73	MANOLIO Gennaro	ITA	Manolio Gennaro		Hyundai i30 N	<b>1'58.592</b>	2.316	0.793	12

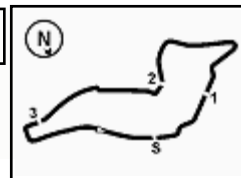
Umidità	59%	ARIA	20°C
Condizioni	DRY	Pista	32°C

Direttore di Gara : Massimiliano Ghinassi

Direttore di Prova : Gianluca Marotta

 Inizio 21/04/2023 14:29  
 Fine 15:02

Esposta alle: .....



## ACI Racing Weekend Imola, 22-23 Aprile 2023

### TCR Italy - Best Sectors & Speed Prove Libere 2

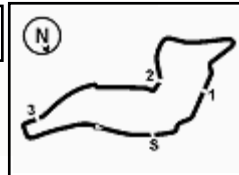
**MIGLIOR GIRO**

1	<b>72 GIROLAMI</b> Franco	Audi RS3 LMS	1'50.716
2	<b>14 JELMINI</b> Felice	Audi RS3 LMS	1'51.474
3	<b>23 VAHTEL</b> Mattias	Honda Civic FK7 H70	1'51.616
4	<b>18 BUTTI</b> Marco	Hvundai Elantra N	1'51.684
5	<b>5 POLONI</b> Matteo	Audi RS3 LMS	1'51.692
6	<b>1 LANGEVELD</b> Niels	Honda Civic FL5	1'52.017
7	<b>9 PARK</b> Junul	Hvundai Elantra N	1'52.164
8	<b>12 FERNANDEZ</b> Ruben	Audi RS3 LMS	1'52.375
9	<b>27 VOLT</b> Ruben	Honda Civic FK7 H70	1'52.388
10	<b>76 COMTE</b> Aurelien	Cupra Leon Competicion	1'52.561
11	<b>8 BABUIN</b> Denis	Audi RS3 LMS	1'52.797
12	<b>67 PELLEGRINI</b> Marco	Audi RS3 LMS	1'52.862
13	<b>19 FERNANDEZ</b> Felipe	Audi RS3 LMS	1'53.029
14	<b>69 RAFFAELE</b> Francesca	Audi RS3 LMS	1'53.107
15	<b>64 LOSONCZY</b> Levente	Hvundai Elantra N	1'53.181
16	<b>77 PUSSIER</b> Sylvain	Cupra Leon Competicion	1'53.433
17	<b>44 IMBERTI</b> Michele	Hvundai i30 N	1'53.456
18	<b>25 ROCCA</b> Paolo	Honda Civic FK7 H70	1'53.538
19	<b>30 BARBERINI</b> Cosimo	Cupra Leon Competicion	1'53.589
20	<b>4 GURRIERI</b> Raffaele	Cupra Leon	1'53.752
21	<b>40 ANTTI</b> Rammo	Honda Civic FK7 H70	1'53.967
22	<b>2 MASSARO</b> Rodolfo	Hvundai Elantra N	1'54.000
23	<b>37 LOPEZ BOLOTIN</b> Sergio	Audi RS3 LMS	1'54.382
24	<b>11 REDUZZI</b> Damiano	Hvundai Elantra N	1'54.450
25	<b>10 PAOLINO</b> Federico	Audi RS3 LMS	1'54.466
26	<b>34 'SCAMA 34'</b>	Hvundai Elantra N	1'54.938
27	<b>13 VISDOMINI</b> Adriano	Audi RS3 LMS	1'55.150
28	<b>21 GUIDA</b> Nicola	Audi RS3 LMS	1'55.339
29	<b>16 CARTIA</b> Giuseppe	Hvundai i30 N	1'56.168
30	<b>96 PALANTI</b> Paolo	Audi RS3 DSG	1'56.276
31	<b>92 FEDELI</b> Carlotta	Audi TCR DSG	1'56.627
32	<b>48 NATALONI</b> Nello	Audi RS3 LMS	1'57.048
33	<b>41 FERNANDEZ</b> Vector	Audi RS3 LMS	1'57.078
34	<b>90 TRENTIN</b> Mauro	Cupra Leon	1'57.537
35	<b>88 GALLO</b> Luigi	Audi RS3 DSG	1'57.667
36	<b>81 DALOKAY</b> Vedat Ali	Audi RS3 DSG	1'57.797
37	<b>33 CHIRIGUT</b> Horia-Traian	Honda Civic FK7 H70	1'57.799
38	<b>80 BARBERI</b> Filippo	Audi RS3 DSG	1'57.813
39	<b>89 LOIA</b> Niccolò	Volkswaeden Golf	1'58.466
40	<b>73 MANOLIO</b> Gennaro	Hvundai i30 N	1'58.592
41	<b>91 CIOFFI-CIOFFI</b>	Volkswaeden Golf	2'00.952
42	<b>99 DE VECCHI</b> Stefano	Audi RS3 DSG	2'06.458
43	<b>86 FANTILLI</b> Giorgio	Cupra Leon	

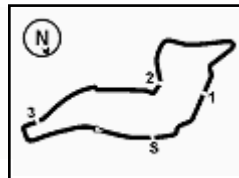
**SPEED**

1	<b>12 FERNANDEZ</b> Ruben	Audi RS3 LMS	256,5
2	<b>5 POLONI</b> Matteo	Audi RS3 LMS	255,9
3	<b>72 GIROLAMI</b> Franco	Audi RS3 LMS	252,9
4	<b>67 PELLEGRINI</b> Marco	Audi RS3 LMS	251,2
5	<b>8 BABUIN</b> Denis	Audi RS3 LMS	250,6
6	<b>69 RAFFAELE</b> Francesca	Audi RS3 LMS	250,6
7	<b>1 LANGEVELD</b> Niels	Honda Civic FL5	250,6
8	<b>14 JELMINI</b> Felice	Audi RS3 LMS	250,0
9	<b>11 REDUZZI</b> Damiano	Hyundai Elantra N	250,0
10	<b>21 GUIDA</b> Nicola	Audi RS3 LMS	249,4
11	<b>19 FERNANDEZ</b> Felipe	Audi RS3 LMS	249,4
12	<b>10 PAOLINO</b> Federico	Audi RS3 LMS	248,8
13	<b>37 LOPEZ BOLOTIN</b> Sergio	Audi RS3 LMS	248,8
14	<b>27 VOLT</b> Ruben	Honda Civic FK7 H70	248,3
15	<b>9 PARK</b> Junul	Hyundai Elantra N	247,7
16	<b>88 GALLO</b> Luigi	Audi RS3 DSG	247,1
17	<b>18 BUTTI</b> Marco	Hyundai Elantra N	247,1
18	<b>30 BARBERINI</b> Cosimo	Cupra Leon Competicion	246,6
19	<b>23 VAHTEL</b> Mattias	Honda Civic FK7 H70	246,6
20	<b>25 ROCCA</b> Paolo	Honda Civic FK7 H70	246,6
21	<b>48 NATALONI</b> Nello	Audi RS3 LMS	246,6
22	<b>2 MASSARO</b> Rodolfo	Hyundai Elantra N	246,6
23	<b>44 IMBERTI</b> Michele	Hyundai i30 N	246,0
24	<b>76 COMTE</b> Aurelien	Cupra Leon Competicion	246,0
25	<b>34 'SCAMA 34'</b>	Hyundai Elantra N	245,5
26	<b>64 LOSONCZY</b> Levente	Hyundai Elantra N	245,5
27	<b>40 ANTTI</b> Rammo	Honda Civic FK7 H70	245,5
28	<b>81 DALOKAY</b> Vedat Ali	Audi RS3 DSG	244,9
29	<b>41 FERNANDEZ</b> Vector	Audi RS3 LMS	244,3
30	<b>77 PUSSIER</b> Sylvain	Cupra Leon Competicion	243,8
31	<b>73 MANOLIO</b> Gennaro	Hyundai i30 N	243,8
32	<b>92 FEDELI</b> Carlotta	Audi TCR DSG	243,8
33	<b>13 VISDOMINI</b> Adriano	Audi RS3 LMS	243,8
34	<b>33 CHIRIGUT</b> Horia-Traian	Honda Civic FK7 H70	243,8
35	<b>4 GURRIERI</b> Raffaele	Cupra Leon	243,2
36	<b>16 CARTIA</b> Giuseppe	Hyundai i30 N	242,7
37	<b>90 TRENTIN</b> Mauro	Cupra Leon	241,1
38	<b>96 PALANTI</b> Paolo	Audi RS3 DSG	240,0
39	<b>80 BARBERI</b> Filippo	Audi RS3 DSG	238,9
40	<b>91 CIOFFI-CIOFFI</b>	Volkswagen Golf	235,8
41	<b>89 LOIA</b> Niccolò	Volkswagen Golf	234,8
42	<b>99 DE VECCHI</b> Stefano	Audi RS3 DSG	232,3





SEG. 1			SEG. 2			SEG. 3			SEG. 4						
1	72	GIROLAMI Franco	23.061	1	72	GIROLAMI Franco	36.461	1	72	GIROLAMI Franco	31.474	1	72	GIROLAMI Franco	19.671
2	5	POLONI Matteo	23.074	2	23	VAHTEL Mattias	36.524	2	14	JELMINI Felice	31.518	2	9	PARK Junul	19.826
3	23	VAHTEL Mattias	23.193	3	1	LANGEVELD Niels	36.581	3	18	BUTTI Marco	31.554	3	5	POLONI Matteo	19.833
4	18	BUTTI Marco	23.282	4	14	JELMINI Felice	36.642	4	9	PARK Junul	31.698	4	18	BUTTI Marco	19.875
5	1	LANGEVELD Niels	23.303	5	9	PARK Junul	36.656	5	76	COMTE Aurelien	31.702	5	23	VAHTEL Mattias	19.880
6	67	PELLEGRINI Marco	23.324	6	27	VOLT Ruben	36.713	6	12	FERNANDEZ Ruben	31.779	6	19	FERNANDEZ Felipe	19.882
7	8	BABUIN Denis	23.332	7	18	BUTTI Marco	36.713	7	5	POLONI Matteo	31.820	7	12	FERNANDEZ Ruben	19.885
8	27	VOLT Ruben	23.353	8	69	RAFFAELE Francesca	36.803	8	23	VAHTEL Mattias	31.824	8	14	JELMINI Felice	19.890
9	14	JELMINI Felice	23.367	9	76	COMTE Aurelien	36.813	9	67	PELLEGRINI Marco	31.835	9	1	LANGEVELD Niels	19.923
10	37	LOPEZ BOLOTIN Sergio	23.415	10	12	FERNANDEZ Ruben	36.823	10	69	RAFFAELE Francesca	32.034	10	27	VOLT Ruben	19.926
11	12	FERNANDEZ Ruben	23.417	11	5	POLONI Matteo	36.869	11	27	VOLT Ruben	32.044	11	67	PELLEGRINI Marco	19.959
12	9	PARK Junul	23.452	12	64	LOSONCZY Levente	36.965	12	64	LOSONCZY Levente	32.053	12	76	COMTE Aurelien	20.004
13	64	LOSONCZY Levente	23.473	13	67	PELLEGRINI Marco	36.995	13	8	BABUIN Denis	32.072	13	30	BARBERINI Cosimo	20.044
14	25	ROCCA Paolo	23.513	14	19	FERNANDEZ Felipe	37.027	14	1	LANGEVELD Niels	32.086	14	8	BABUIN Denis	20.053
15	76	COMTE Aurelien	23.524	15	25	ROCCA Paolo	37.030	15	19	FERNANDEZ Felipe	32.133	15	69	RAFFAELE Francesca	20.071
16	69	RAFFAELE Francesca	23.560	16	8	BABUIN Denis	37.078	16	21	GUIDA Nicola	32.146	16	2	MASSARO Rodolfo	20.077
17	19	FERNANDEZ Felipe	23.564	17	44	IMBERTI Michele	37.134	17	44	IMBERTI Michele	32.162	17	4	GURRIERI Raffaele	20.102
18	44	IMBERTI Michele	23.644	18	37	LOPEZ BOLOTIN Sergio	37.135	18	2	MASSARO Rodolfo	32.271	18	37	LOPEZ BOLOTIN Sergio	20.151
19	4	GUIDA Nicola	23.662	19	30	BARBERINI Cosimo	37.160	19	37	LOPEZ BOLOTIN Sergio	32.279	19	44	IMBERTI Michele	20.154
20	4	GURRIERI Raffaele	23.665	20	77	PUSSIER Sylvain	37.199	20	25	ROCCA Paolo	32.295	20	11	REDUZZI Damiano	20.160
21	77	PUSSIER Sylvain	23.673	21	2	MASSARO Rodolfo	37.218	21	40	ANTTI Rammo	32.298	21	77	PUSSIER Sylvain	20.169
22	30	BARBERINI Cosimo	23.717	22	4	GURRIERI Raffaele	37.246	22	77	PUSSIER Sylvain	32.357	22	25	ROCCA Paolo	20.228
23	2	MASSARO Rodolfo	23.718	23	11	REDUZZI Damiano	37.309	23	10	PAOLINO Federico	32.373	23	10	PAOLINO Federico	20.255
24	40	ANTTI Rammo	23.737	24	40	ANTTI Rammo	37.348	24	4	GURRIERI Raffaele	32.396	24	64	LOSONCZY Levente	20.258
25	11	REDUZZI Damiano	23.783	25	34	'SCAMA 34'	37.691	25	30	BARBERINI Cosimo	32.433	25	40	ANTTI Rammo	20.266
26	10	PAOLINO Federico	23.788	26	21	GUIDA Nicola	37.736	26	13	VISDOMINI Adriano	32.440	26	13	VISDOMINI Adriano	20.324
27	34	'SCAMA 34'	23.836	27	10	PAOLINO Federico	37.750	27	11	REDUZZI Damiano	32.643	27	21	GUIDA Nicola	20.400
28	16	CARTIA Giuseppe	24.081	28	13	VISDOMINI Adriano	38.135	28	34	'SCAMA 34'	32.688	28	48	NATALONI Nello	20.409
29	13	VISDOMINI Adriano	24.145	29	96	PALANTI Paolo	38.144	29	41	FERNANDEZ Vector	32.919	29	16	CARTIA Giuseppe	20.410
30	92	FEDELI Carlotta	24.195	30	16	CARTIA Giuseppe	38.255	30	16	CARTIA Giuseppe	32.990	30	34	'SCAMA 34'	20.426
31	48	NATALONI Nello	24.229	31	92	FEDELI Carlotta	38.263	31	96	PALANTI Paolo	33.141	31	92	FEDELI Carlotta	20.427
32	96	PALANTI Paolo	24.251	32	48	NATALONI Nello	38.333	32	80	BARBERI Filippo	33.262	32	73	MANOLIO Gennaro	20.500
33	33	CHIRIGUT Horia-Traian	24.447	33	41	FERNANDEZ Vector	38.400	33	90	TRENTIN Mauro	33.363	33	88	GALLO Luigi	20.541
34	90	TRENTIN Mauro	24.500	34	90	TRENTIN Mauro	38.518	34	48	NATALONI Nello	33.393	34	41	FERNANDEZ Vector	20.545
35	73	MANOLIO Gennaro	24.544	35	80	BARBERI Filippo	38.607	35	33	CHIRIGUT Horia-Traian	33.518	35	81	DALOKAY Vedat Ali	20.582
36	81	DALOKAY Vedat Ali	24.567	36	89	LOIA Niccolò	38.677	36	92	FEDELI Carlotta	33.653	36	80	BARBERI Filippo	20.688
37	41	FERNANDEZ Vector	24.585	37	88	GALLO Luigi	38.745	37	73	MANOLIO Gennaro	33.657	37	96	PALANTI Paolo	20.690
38	88	GALLO Luigi	24.608	38	81	DALOKAY Vedat Ali	38.909	38	81	DALOKAY Vedat Ali	33.711	38	33	CHIRIGUT Horia-Traian	20.728
39	89	LOIA Niccolò	24.761	39	33	CHIRIGUT Horia-Traian	39.106	39	89	LOIA Niccolò	33.756	39	90	TRENTIN Mauro	20.776
40	80	BARBERI Filippo	24.853	40	73	MANOLIO Gennaro	39.236	40	88	GALLO Luigi	33.773	40	89	LOIA Niccolò	20.899
41	91	CIOFFI-CIOFFI	25.457	41	91	CIOFFI-CIOFFI	39.719	41	91	CIOFFI-CIOFFI	34.277	41	91	CIOFFI-CIOFFI	21.343
42	99	DE VECCHI Stefano	26.316	42	99	DE VECCHI Stefano	40.981	42	99	DE VECCHI Stefano	35.052	42	99	DE VECCHI Stefano	21.984



# ACI Racing Weekend Imola, 22-23 Aprile 2023

## TCR Italy - Ideal Time Prove Libere 2

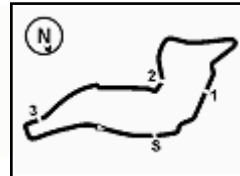
Imola Circuit 4.909 m

1 / 2

Num. Conduattore	Auto	Seg. 1 Diff. 1	Seg. 2 Diff. 2	Seg. 3 Diff. 3	Seg. 4 Diff. 4	Ideal Time			
						Miglior Giro	Pos.	Diff.	
1	<b>72 GIROLAMI F.</b> (ARG)	Audi RS3 LMS	23.061	36.461 +0.049	31.474	19.671	<b>1'50.667</b> 1'50.716	1	0.049
2	<b>14 JELMINI F.</b> (ITA)	Audi RS3 LMS	23.367 +0.057	36.642	31.518	19.890	<b>1'51.417</b> 1'51.474	2	0.057
3	<b>23 VAHTEL M.</b> (EST)	Honda Civic FK7 H70	23.193 +0.042	36.524 +0.115	31.824 +0.038	19.880	<b>1'51.421</b> 1'51.616	3	0.195
4	<b>18 BUTTI M.</b> (ITA)	Hyundai Elantra N	23.282	36.713	31.554 +0.008	19.875 +0.252	<b>1'51.424</b> 1'51.684	4	0.260
5	<b>5 POLONI M.</b> (ITA)	Audi RS3 LMS	23.074 +0.010	36.869 +0.077	31.820	19.833 +0.009	<b>1'51.596</b> 1'51.692	5	0.096
6	<b>9 PARK J.</b> (KOR)	Hyundai Elantra N	23.452	36.656 +0.296	31.698 +0.064	19.826 +0.172	<b>1'51.632</b> 1'52.164	7	0.532
7	<b>1 LANGEVELD N.</b> (NLD)	Honda Civic FL5	23.303 +0.050	36.581	32.086	19.923 +0.074	<b>1'51.893</b> 1'52.017	6	0.124
8	<b>12 FERNANDEZ R.</b> (ESP)	Audi RS3 LMS	23.417 +0.142	36.823	31.779 +0.320	19.885 +0.009	<b>1'51.904</b> 1'52.375	8	0.471
9	<b>27 VOLT R.</b> (EST)	Honda Civic FK7 H70	23.353 +0.027	36.713 +0.163	32.044 +0.011	19.926 +0.151	<b>1'52.036</b> 1'52.388	9	0.352
10	<b>76 COMTE A.</b> (FRA)	Cupra Leon Competicion	23.524 +0.101	36.813 +0.030	31.702 +0.253	20.004 +0.134	<b>1'52.043</b> 1'52.561	10	0.518
11	<b>67 PELLEGRINI M.</b> (ITA)	Audi RS3 LMS	23.324 +0.313	36.995 +0.436	31.835	19.959	<b>1'52.113</b> 1'52.862	12	0.749
12	<b>69 RAFFAELE F.</b> (ITA)	Audi RS3 LMS	23.560 +0.132	36.803 +0.416	32.034	20.071 +0.091	<b>1'52.468</b> 1'53.107	14	0.639
13	<b>8 BABUIN D.</b> (ITA)	Audi RS3 LMS	23.332 +0.080	37.078 +0.172	32.072	20.053 +0.010	<b>1'52.535</b> 1'52.797	11	0.262
14	<b>19 FERNANDEZ F.</b> (ESP)	Audi RS3 LMS	23.564 +0.234	37.027 +0.189	32.133	19.882	<b>1'52.606</b> 1'53.029	13	0.423
15	<b>64 LOSONCZY L.</b> (HUN)	Hyundai Elantra N	23.473 +0.207	36.965	32.053 +0.225	20.258	<b>1'52.749</b> 1'53.181	15	0.432
16	<b>37 LOPEZ BOLOTIN S.</b> (VE)	Audi RS3 LMS	23.415 +0.860	37.135 +0.266	32.279 +0.207	20.151 +0.069	<b>1'52.980</b> 1'54.382	23	1.402
17	<b>25 ROCCA P.</b> (ITA)	Honda Civic FK7 H70	23.513	37.030	32.295 +0.106	20.228 +0.366	<b>1'53.066</b> 1'53.538	18	0.472
18	<b>44 IMBERTI M.</b> (ITA)	Hyundai i30 N	23.644 +0.140	37.134 +0.222	32.162	20.154	<b>1'53.094</b> 1'53.456	17	0.362
19	<b>2 MASSARO R.</b> (ITA)	Hyundai Elantra N	23.718 +0.086	37.218 +0.381	32.271	20.077 +0.249	<b>1'53.284</b> 1'54.000	22	0.716
20	<b>30 BARBERINI C.</b> (ITA)	Cupra Leon Competicion	23.717 +0.108	37.160 +0.127	32.433	20.044	<b>1'53.354</b> 1'53.589	19	0.235
21	<b>77 PUSSIER S.</b> (FRA)	Cupra Leon Competicion	23.673 +0.031	37.199	32.357	20.169 +0.004	<b>1'53.398</b> 1'53.433	16	0.035
22	<b>4 GURRIERI R.</b> (ITA)	Cupra Leon	23.665	37.246 +0.343	32.396	20.102	<b>1'53.409</b> 1'53.752	20	0.343
23	<b>40 ANTTI R.</b> (EST)	Honda Civic FK7 H70	23.737 +0.305	37.348	32.298 +0.013	20.266	<b>1'53.649</b> 1'53.967	21	0.318
24	<b>11 REDUZZI D.</b> (ITA)	Hyundai Elantra N	23.783 +0.496	37.309 +0.059	32.643	20.160	<b>1'53.895</b> 1'54.450	24	0.555
25	<b>21 GUIDA N.</b> (ITA)	Audi RS3 LMS	23.662 +0.454	37.736 +0.527	32.146 +0.414	20.400	<b>1'53.944</b> 1'55.339	28	1.395
26	<b>10 PAOLINO F.</b> (ITA)	Audi RS3 LMS	23.788 +0.212	37.750	32.373 +0.088	20.255	<b>1'54.166</b> 1'54.466	25	0.300
27	<b>34 'SCAMA 34'</b> (BEL)	Hyundai Elantra N	23.836 +0.137	37.691	32.688 +0.125	20.426 +0.035	<b>1'54.641</b> 1'54.938	26	0.297
28	<b>13 VISDOMINI A.</b> (ITA)	Audi RS3 LMS	24.145	38.135	32.440	20.324 +0.106	<b>1'55.044</b> 1'55.150	27	0.106
29	<b>16 CARTIA G.</b> (ITA)	Hyundai i30 N	24.081 +0.296	38.255 +0.020	32.990	20.410 +0.116	<b>1'55.736</b> 1'56.168	29	0.432
30	<b>96 PALANTI P.</b> (ITA)	Audi RS3 DSG	24.251	38.144	33.141	20.690 +0.050	<b>1'56.226</b> 1'56.276	30	0.050
31	<b>48 NATALONI N.</b> (ITA)	Audi RS3 LMS	24.229 +0.252	38.333 +0.086	33.393 +0.175	20.409 +0.171	<b>1'56.364</b> 1'57.048	32	0.684
32	<b>41 FERNANDEZ V.</b> (ESP)	Audi RS3 LMS	24.585 +0.077	38.400 +0.054	32.919 +0.445	20.545 +0.053	<b>1'56.449</b> 1'57.078	33	0.629
33	<b>92 FEDELI C.</b> (ITA)	Audi TCR DSG	24.195	38.263	33.653 +0.039	20.427 +0.050	<b>1'56.538</b> 1'56.627	31	0.089

21/04/2023





## ACI Racing Weekend Imola, 22-23 Aprile 2023

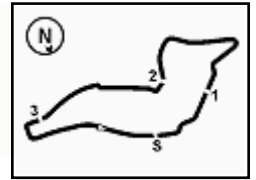
### TCR Italy - Ideal Time Prove Libere 2

Imola Circuit 4.909 m

**2 / 2**

Num. Conduttore	Auto	Seg. 1	Seg. 2	Seg. 3	Seg. 4	Ideal Time			
		Diff. 1	Diff. 2	Diff. 3	Diff. 4	Miglior Giro	Pos.	Diff.	
34	<b>90 TRENTIN M.</b> (ITA)	Cupra Leon	24.500 +0.320	38.518	33.363 +0.060	20.776	<b>1'57.157</b> 1'57.537	34	0.380
35	<b>80 BARBERI F.</b> (ITA)	Audi RS3 DSG	24.853	38.607	33.262 +0.276	20.688 +0.127	<b>1'57.410</b> 1'57.813	38	0.403
36	<b>88 GALLO L.</b> (ITA)	Audi RS3 DSG	24.608	38.745	33.773	20.541	<b>1'57.667</b> 1'57.667	35	
37	<b>81 DALOKAY V.</b> (TUR)	Audi RS3 DSG	24.567	38.909	33.711	20.582 +0.028	<b>1'57.769</b> 1'57.797	36	0.028
38	<b>33 CHIRIGUT H.</b> (ROU)	Honda Civic FK7 H70	24.447	39.106	33.518	20.728	<b>1'57.799</b> 1'57.799	37	
39	<b>73 MANOLIO G.</b> (ITA)	Hyundai i30 N	24.544 +0.168	39.236 +0.094	33.657 +0.393	20.500	<b>1'57.937</b> 1'58.592	40	0.655
40	<b>89 LOIA N.</b> (ITA)	Volkswagen Golf	24.761	38.677 +0.296	33.756	20.899 +0.077	<b>1'58.093</b> 1'58.466	39	0.373
41	<b>91 CIOFFI-CIOFFI</b> (ITA)	Volkswagen Golf	25.457	39.719 +0.156	34.277	21.343	<b>2'00.796</b> 2'00.952	41	0.156
42	<b>99 DE VECCHI S.</b> (ITA)	Audi RS3 DSG	26.316	40.981	35.052 +2.125	21.984	<b>2'04.333</b> 2'06.458	42	2.125
	<b>86 FANTILLI G.</b> (ITA)	Cupra Leon							
<b>Ideal Time Assoluto</b>			23.061	36.461	31.474	19.671	<b>1'50.667</b>		




**1 N. LANGEVELD (1'52.017)**

Giro	Seg.1	Seg.2	Seg.3	Seg.4	T. Giro	km/h	Local Time
1		41.196	35.180	21.148		157,2	14:32'33.095
2	24.743	38.033	32.866	37.200	2'12.842P	245,5	14:34'45.937
3	2'38.509	39.309	33.945	37.398	4'29.161P	140,8	14:39'15.098
4	1'12.432	39.028	38.548	21.089	2'51.097P	161,0	14:42'06.195
5	23.865	37.433	32.193	19.923	1'53.414	248,3	14:43'59.609
6	23.353	<b>36.581</b>	<b>32.086</b>	19.997	<b>1'52.017</b>	247,1	14:45'51.626
7	23.308	37.301	41.708	40.135	2'22.452P	249,4	14:48'14.078
8	2'40.789	38.077	34.077	22.895	4'15.838P	161,0	14:52'29.916
9	30.039	1'06.081	1'02.236	58.122	3'36.478P	240,5	14:56'06.394
10	2'21.748	36.988	32.273	20.097	3'51.106P		14:59'57.500

3	24.412	38.476	33.051	20.554	1'56.493	227,8	14:35'10.499
4	24.303	37.716	32.312	20.211	1'54.542	243,2	14:37'05.041
5	23.480	37.774	32.469	20.122	1'53.845	248,3	14:38'58.886
6	23.412	37.250	<b>32.072</b>	20.063	<b>1'52.797</b>	246,0	14:40'51.683
7	23.563	39.343	32.549	20.216	1'55.671	246,0	14:42'47.354
8	24.481	39.369	35.406	2'45.787	4'25.043P	244,3	14:47'12.397
9	43.510	38.674	33.608	20.520	2'16.312P	137,8	14:49'28.709
10	23.683	<b>37.078</b>	32.205	20.073	1'53.039	247,7	14:51'21.748
11	24.010	37.140	43.611	42.543	2'27.304	<b>250,6</b>	14:53'49.052
12	58.444	1'04.803	54.198	20.482	3'17.927	75,5	14:57'06.979
13	23.560	37.092	33.295	20.222	1'54.169	246,6	14:59'01.148
14	<b>23.332</b>	37.297	32.139	<b>20.053</b>	1'52.821	249,4	15:00'53.969

**2 R. MASSARO (1'54.000)**

Giro	Seg.1	Seg.2	Seg.3	Seg.4	T. Giro	km/h	Local Time
1		40.321	34.278	21.005		154,5	14:32'20.152
2	24.547	37.758	32.934	<b>20.077</b>	1'55.316	237,4	14:34'15.468
3	23.823	37.273	32.814	20.481	1'54.391	243,2	14:36'09.859
4	23.804	37.599	<b>32.271</b>	20.326	<b>1'54.000</b>	243,2	14:38'03.859
5	24.746	<b>37.218</b>	31.874	41.852	2'15.690CP	246,0	14:40'19.549
6	2'43.908	38.370	33.102	21.032	4'16.412P	157,9	14:44'35.961
7	24.267	37.327	32.152	20.368	1'54.114C	243,8	14:46'30.075
8	24.653	37.920	32.293	20.405	1'55.271C	<b>246,6</b>	14:48'25.346
9	<b>23.718</b>	37.806	33.093	20.134	1'54.751	246,0	14:50'20.097
10	23.895	37.510	32.527	20.193	1'54.125C	244,9	14:52'14.222
11	26.056	1'08.235	1'05.190	44.060	3'23.541	229,8	14:55'37.763
12	54.479	42.232	32.744	20.461	2'29.916C	82,0	14:58'07.679
13	23.858	37.564	32.372	20.509	1'54.303	243,2	15:00'01.982

**9 J. PARK (1'52.164)**

Giro	Seg.1	Seg.2	Seg.3	Seg.4	T. Giro	km/h	Local Time
1		45.170	38.490	22.188		151,5	14:32'40.870
2	27.298	38.581	35.738	20.132	2'01.749	224,5	14:34'42.619
3	24.002	37.484	31.974	20.149	1'53.609	243,2	14:36'36.228
4	23.853	<b>36.656</b>	32.084	<b>19.826</b>	1'52.419	244,3	14:38'28.647
5	24.717	37.932	32.283	19.954	1'54.886	246,0	14:40'23.533
6	23.742	36.975	<b>31.698</b>	19.880	1'52.295	243,2	14:42'15.828
7	<b>23.452</b>	36.952	31.762	19.998	<b>1'52.164</b>	244,9	14:44'07.992
8	23.766	37.380	33.140	38.376	2'12.662P	243,8	14:46'20.654
9	2'34.955	38.213	37.003	20.334	4'10.505P	156,5	14:50'31.159
10	23.598	36.741	31.827	20.360	1'52.526	244,3	14:52'23.685
11	24.569	1'10.896	1'03.965	42.290	3'21.720	<b>247,7</b>	14:55'45.405
12	55.372	40.090	32.505	19.996	2'27.963	81,1	14:58'13.368
13	24.020	37.198	31.982	20.027	1'53.227	246,0	15:00'06.595

**4 R. GURRIERI (1'53.752)**

Giro	Seg.1	Seg.2	Seg.3	Seg.4	T. Giro	km/h	Local Time
1		44.908	38.615	23.019		156,5	14:32'36.822
2	28.251	41.162	39.754	42.193	2'31.360P	199,6	14:35'08.182
3	2'54.029	42.438	35.846	22.080	4'34.393P	161,2	14:39'42.575
4	24.093	38.311	32.933	20.316	1'55.653	241,6	14:41'38.228
5	<b>23.665</b>	37.589	<b>32.396</b>	<b>20.102</b>	<b>1'53.752</b>	241,6	14:43'31.980
6	23.813	<b>37.246</b>	32.537	20.167	1'53.763	241,6	14:45'25.743
7	23.888	37.483	32.399	20.023	1'53.793C	242,7	14:47'19.536
8	24.074	38.116	40.723	39.689	2'22.602P	242,7	14:49'42.138
9	2'56.115	1'02.925	58.357	48.273	5'45.670P	118,8	14:55'27.808
10	1'15.835	40.624	33.417	20.766	2'50.642P	76,2	14:58'18.450
11	24.357	38.284	32.949	20.479	1'56.069	<b>243,2</b>	15:00'14.519

**10 F. PAOLINO (1'54.466)**

Giro	Seg.1	Seg.2	Seg.3	Seg.4	T. Giro	km/h	Local Time
1		43.148	36.519	21.823		157,9	14:32'32.320
2	25.083	40.676	33.729	39.130	2'18.618P	241,1	14:34'50.938
3	3'08.779	42.560	34.032	22.579	4'47.950P	157,2	14:39'38.888
4	24.000	<b>37.750</b>	32.461	<b>20.255</b>	<b>1'54.466</b>	247,7	14:41'33.354
5	24.025	38.000	<b>32.373</b>	20.280	1'54.678	247,1	14:43'28.032
6	23.834	38.195	32.413	20.428	1'54.870	247,1	14:45'22.902
7	26.685	39.887	34.419	37.186	2'18.177P	237,4	14:47'41.079
8	2'56.790	41.197	33.693	20.933	4'32.613P	158,8	14:52'13.692
9	26.181	1'06.011	1'05.867	41.191	3'19.250	220,0	14:55'32.942
10	48.689	44.396	33.739	22.479	2'29.303	93,1	14:58'02.245
11	24.228	38.015	32.736	21.767	1'56.746	245,5	14:59'58.991
12	<b>23.788</b>	38.234	32.631	21.027	1'55.680	<b>248,8</b>	15:01'54.671

**5 M. POLONI (1'51.692)**

Giro	Seg.1	Seg.2	Seg.3	Seg.4	T. Giro	km/h	Local Time
1							14:31'11.266
2	48.996	45.708	36.701	21.259	2'32.664P	124,6	14:33'43.930
3	25.844	41.417	35.707	20.223	2'03.191	242,2	14:35'47.121
4	23.522	37.267	31.996	19.846	1'52.631	248,3	14:37'39.752
5	23.533	36.997	34.849	19.843	1'55.222	<b>255,9</b>	14:39'34.974
6	23.084	36.946	<b>31.820</b>	19.842	<b>1'51.692</b>	250,6	14:41'26.666
7	<b>23.074</b>	<b>36.869</b>	32.073	5'56.982	7'28.998P	251,7	14:48'55.664
8	40.586	43.143	37.592	20.137	2'21.458P	159,8	14:51'17.122
9	23.268	36.903	34.901	38.955	2'14.027	250,6	14:53'31.149
10	56.185	1'11.166	1'04.373	20.274	3'31.998	80,9	14:57'03.147
11	23.519	37.002	32.213	<b>19.833</b>	1'52.567	247,1	14:58'55.714
12	23.299	36.939	31.898	19.838	1'51.974	249,4	15:00'47.688

**11 D. REDUZZI (1'54.450)**

Giro	Seg.1	Seg.2	Seg.3	Seg.4	T. Giro	km/h	Local Time
1							14:30'38.716
2	43.971	41.341	35.460	2'57.633	4'58.405P	147,9	14:35'37.121
3	54.956	40.675	34.328	20.726	2'30.685P	154,5	14:38'07.806
4	24.263	38.257	32.780	20.533	1'55.833	238,9	14:40'03.639
5	24.001	38.062	33.885	21.037	1'56.985	241,1	14:42'00.624
6	24.129	43.534	33.362	20.619	2'01.644	243,8	14:44'02.268
7	27.319	40.881	32.881	20.354	2'01.435	241,6	14:46'03.703
8	23.979	37.520	33.459	2'00.937	3'35.895P	241,1	14:49'39.598
9	41.973	38.535	43.514	20.388	2'24.410P	127,5	14:52'04.008
10	25.794	54.720	59.949	36.947	2'57.410	<b>250,0</b>	14:55'01.418
11	53.663	58.260	33.554	22.592	2'48.069	81,6	14:57'49.487
12	24.279	37.368	<b>32.643</b>	<b>20.160</b>	<b>1'54.450</b>	238,9	14:59'43.937
13	<b>23.783</b>	<b>37.309</b>	33.677	21.021	1'55.790	245,5	15:01'39.727

**8 D. BABUIN (1'52.797)**

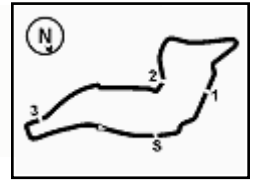
Giro	Seg.1	Seg.2	Seg.3	Seg.4	T. Giro	km/h	Local Time
1							14:30'51.469
2	45.313	41.773	34.666	20.785	2'22.537P	159,8	14:33'14.006

**12 R. FERNANDEZ (1'52.375)**

Giro	Seg.1	Seg.2	Seg.3	Seg.4	T. Giro	km/h	Local Time
1							







Imola Circuit 4.909 m

# ACI Racing Weekend Imola, 22-23 Aprile 2023

## TCR Italy - Analisi Tempi Prove Libere 2

Pos	Driver	Seg.1	Seg.2	Seg.3	Seg.4	T. Giro	km/h	Local Time
1								14:30'17.363
2	45.677	42.768	35.974	1'36.181	3'40.600P	152,8	14:33'57.963	26.935
3	49.272	38.564	33.246	20.733	2'21.815CP		14:36'19.778	23.576
4	24.078	37.486	32.181	20.116	1'53.861	245,5	14:38'13.639	23.851
5	23.611	37.290	32.383	19.927	1'53.211	248,8	14:40'06.850	2'55.963
6	23.510	37.112	33.058	21.592	1'55.272	250,0	14:42'02.122	23.875
7	23.657	37.940	32.840	1'44.240	3'18.677P	253,5	14:45'20.799	3'28.812
8	47.640	49.149	37.847	21.747	2'36.383P	145,2	14:47'57.182	23.382
9	23.941	40.685	38.126	20.771	2'03.523	253,5	14:50'00.705	26.863
10	23.665	37.310	<b>31.779</b>	<b>19.885</b>	1'52.639	245,5	14:51'53.344	55.011
11	23.611	37.096	1'06.364	40.561	2'47.632	255,3	14:54'40.976	<b>23.282</b>
12	54.064	1'08.183	37.748	20.612	3'00.607	85,7	14:57'41.583	<b>36.713</b>
13	23.559	<b>36.823</b>	32.099	19.894	<b>1'52.375</b>	247,7	14:59'33.958	1'08.131
14	<b>23.417</b>	38.167	31.862	19.939	1'53.385	<b>256,5</b>	15:01'27.343	1'01.794

**19 F. FERNANDEZ (1'53.029)**

Giro	Seg.1	Seg.2	Seg.3	Seg.4	T. Giro	km/h	Local Time
1							14:30'22.121
2	46.539	41.882	35.452	1'36.523	3'40.396P	132,0	14:34'02.517
3	40.062	38.661	33.030	20.399	2'12.152P	150,0	14:36'14.669
4	24.497	37.813	34.085	20.294	1'56.689	241,1	14:38'11.358
5	23.883	37.660	32.501	20.181	1'54.225	244,3	14:40'05.583
6	23.785	38.981	33.635	3'46.242	5'22.643P	244,9	14:45'28.226
7	43.308	46.646	38.144	22.200	2'30.298P	130,1	14:47'58.524
8	24.131	39.816	37.895	20.901	2'02.743	243,8	14:50'01.267
9	23.798	37.216	<b>32.133</b>	<b>19.882</b>	<b>1'53.029</b>	248,8	14:51'54.296
10	23.597	39.155	1'04.554	40.729	2'48.035	<b>249,4</b>	14:54'42.331
11	53.618	1'07.935	37.392	20.863	2'59.808	82,8	14:57'42.139
12	24.011	37.444	34.503	20.038	1'55.996C	246,0	14:59'38.135
13	<b>23.564</b>	<b>37.027</b>	32.153	20.314	1'53.058	248,8	15:01'31.193

**21 N. GUIDA (1'55.339)**

Giro	Seg.1	Seg.2	Seg.3	Seg.4	T. Giro	km/h	Local Time
1							14:32'40.404
2	28.161	44.171	36.655	40.819	2'29.806P	223,6	14:35'10.210
3	3'20.145	43.228	36.081	21.068	5'00.522P	156,7	14:40'10.732
4	24.365	38.628	32.890	20.777	1'56.660	247,7	14:42'07.392
5	24.116	38.263	32.560	<b>20.400</b>	<b>1'55.339</b>	<b>249,4</b>	14:44'02.731
6	25.120	39.310	32.524	20.403	1'57.357	241,1	14:46'00.088
7	23.815	<b>37.736</b>	34.544	21.684	1'57.779	248,3	14:47'57.867
8	23.938	37.948	<b>32.146</b>	40.014	2'14.046P	<b>249,4</b>	14:50'11.913
9	2'27.434	1'05.353	1'00.730	38.701	5'12.218P	159,1	14:55'24.131
10	52.103	46.665	33.484	20.589	2'32.841	70,9	14:57'56.972
11	24.095	38.608	32.677	20.831	1'56.211	247,7	14:59'53.183
12	<b>23.662</b>	37.811	33.726	20.505	1'55.704	248,8	15:01'48.887

**23 M. VAHTEL (1'51.616)**

Giro	Seg.1	Seg.2	Seg.3	Seg.4	T. Giro	km/h	Local Time
1							14:30'04.845
2	57.206	42.833	36.183	22.396	2'38.618P	146,3	14:32'43.463
3	25.703	40.846	34.663	22.925	2'04.137	241,6	14:34'47.600
4	23.529	37.439	33.014	20.427	1'54.409C	243,8	14:36'42.009
5	23.556	36.844	<b>31.824</b>	19.965	1'52.189	243,2	14:38'34.198
6	<b>23.193</b>	37.072	32.368	20.467	1'53.100	<b>246,6</b>	14:40'27.298
7	24.476	37.548	32.093	19.987	1'54.104	244,3	14:42'21.402
8	23.508	37.030	32.537	20.200	1'53.275	244,9	14:44'14.677
9	23.580	36.847	32.155	19.977	1'52.559	242,7	14:46'07.236
10	23.289	36.938	32.593	42.656	2'15.476CP	244,3	14:48'22.712
11	1'34.905	41.834	34.828	20.150	3'11.717P	108,4	14:51'34.429
12	23.334	<b>36.524</b>	1'04.719	36.859	2'41.436	244,9	14:54'15.865
13	55.124	1'08.293	44.566	20.441	3'08.424	78,3	14:57'24.289
14	23.467	36.557	31.941	19.912	1'51.877C	242,2	14:59'16.166
15	23.235	36.639	31.862	<b>19.880</b>	<b>1'51.616</b>	244,9	15:01'07.782

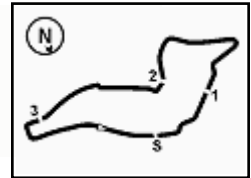
**18 M. BUTTI (1'51.684)**

Giro	Seg.1	Seg.2	Seg.3	Seg.4	T. Giro	km/h	Local Time
------	-------	-------	-------	-------	---------	------	------------

**25 P. ROCCA (1'53.538)**

Giro	Seg.1	Seg.2	Seg.3	Seg.4	T. Giro	km/h	Local Time
------	-------	-------	-------	-------	---------	------	------------

21/04/2023 P = Box In/Out - C = Tempo Invalidato



Imola Circuit 4.909 m

**ACI Racing Weekend Imola, 22-23 Aprile 2023**
**TCR Italy - Analisi Tempi Prove Libere 2**
**3 / 6**

1		44.720	39.153	22.865		150,4	14:34'00.189	2	44.939	41.132	36.003	2'19.807	4'21.881P	152,5	14:34'54.020
2	27.766	41.942	36.842	40.312	2'26.862P	213,0	14:36'27.051	3	42.971	38.319	33.102	20.634	2'15.026P	158,6	14:37'09.046
3	1'59.313	40.833	33.528	20.922	3'34.596P	120,8	14:40'01.647	4	24.117	38.070	34.760	20.457	1'57.404	243,8	14:39'06.450
4	24.262	37.754	32.940	20.282	1'55.238	242,2	14:41'56.885	5	24.317	37.958	33.110	20.363	1'55.748C	241,1	14:41'02.198
5	24.068	37.491	32.554	21.540	1'55.653	<b>246,6</b>	14:43'52.538	6	24.098	37.996	32.918	20.737	1'55.749	244,3	14:42'57.947
6	24.615	37.246	32.599	20.291	1'54.751	228,3	14:45'47.289	7	24.113	39.011	33.423	20.635	1'57.182	241,6	14:44'55.129
7	24.611	39.910	33.967	36.651	2'15.139P	241,1	14:48'02.428	8	23.973	<b>37.691</b>	32.813	20.461	<b>1'54.938</b>	243,2	14:46'50.067
8	1'35.753	38.020	32.467	<b>20.228</b>	3'06.468P	159,1	14:51'08.896	9	24.006	37.923	33.014	20.374	1'55.317C	243,8	14:48'45.384
9	23.793	37.170	<b>32.295</b>	30.968	2'04.226	<b>246,6</b>	14:53'13.122	10	23.969	38.032	<b>32.688</b>	20.486	1'55.175	241,6	14:50'40.559
10	53.324	1'06.937	1'07.171	28.832	3'36.264	92,3	14:56'49.366	11	<b>23.836</b>	37.817	32.836	20.476	1'54.965C	243,8	14:52'35.524
11	24.720	37.426	37.748	21.288	2'01.182	240,5	14:58'50.588	12	37.703	1'07.476	1'00.880	40.555	3'26.614	204,5	14:56'02.138
12	<b>23.513</b>	<b>37.030</b>	32.401	20.594	<b>1'53.538</b>	243,2	15:00'44.106	13	44.551	38.835	33.254	20.760	2'17.400	82,4	14:58'19.538
								14	24.029	38.323	33.060	<b>20.426</b>	1'55.838	<b>245,5</b>	15:00'15.376

**27 R. VOLT (1'52.388)**

Giro	Seg.1	Seg.2	Seg.3	Seg.4	T. Giro	km/h	Local Time
1							14:30'06.182
2	56.197	41.009	35.895	22.543	2'35.644P	155,6	14:32'41.826
3	26.619	38.809	35.607	21.540	2'02.575	243,2	14:34'44.401
4	23.801	38.118	32.718	20.107	1'54.744	242,7	14:36'39.145
5	23.781	37.315	32.605	<b>19.926</b>	1'53.627	243,2	14:38'32.772
6	23.470	37.099	32.759	20.370	1'53.698C	245,5	14:40'26.470
7	24.007	37.102	<b>32.044</b>	19.955	1'53.108	242,2	14:42'19.578
8	23.544	<b>36.713</b>	32.308	20.136	1'52.701	244,3	14:44'12.279
9	23.496	37.113	32.338	1'46.667	3'19.614P	244,9	14:47'31.893
10	42.755	42.897	43.794	21.594	2'31.040P	128,7	14:50'02.933
11	23.380	36.876	32.055	20.077	<b>1'52.388</b>	246,6	14:51'55.321
12	<b>23.353</b>	44.185	1'02.795	41.019	2'51.352	247,7	14:54'46.673
13	54.577	1'06.944	35.041	22.990	2'59.552	83,1	14:57'46.225
14	23.621	37.128	33.576	20.186	1'54.511C	245,5	14:59'40.736
15	24.131	38.941	33.482	20.189	1'56.743	<b>248,3</b>	15:01'37.479

**37 S. LOPEZ BOLOTIN (1'54.382)**

Giro	Seg.1	Seg.2	Seg.3	Seg.4	T. Giro	km/h	Local Time
1							14:30'23.860
2	45.347	41.798	35.600	21.690	2'24.435P	149,4	14:32'48.295
3	24.256	39.352	33.423	20.712	1'57.743	241,1	14:34'46.038
4	23.902	38.300	32.593	21.597	1'56.392	247,1	14:36'42.430
5	24.275	37.401	32.486	20.220	<b>1'54.382</b>	242,2	14:38'36.812
6	23.550	37.431	<b>32.279</b>	20.373	1'53.633C	247,7	14:40'30.445
7	23.677	38.053	32.358	45.225	2'19.313P	247,7	14:42'49.758
8	53.900	40.473	32.774	3'03.248	5'10.395P	155,0	14:48'00.153
9	40.083	39.177	33.382	20.667	2'13.309P	151,0	14:50'13.462
10	24.068	37.566	32.398	20.169	1'54.201C	245,5	14:52'07.663
11	29.803	48.707	1'01.338	43.277	3'03.125P	248,3	14:55'10.788
12	1'12.073	43.828	32.934	20.654	2'49.489P	113,3	14:58'00.277
13	23.434	<b>37.135</b>	34.035	<b>20.151</b>	1'54.755	247,1	14:59'55.032
14	<b>23.415</b>	37.649	32.686	20.917	1'54.667	<b>248,8</b>	15:01'49.699

**30 C. BARBERINI (1'53.589)**

Giro	Seg.1	Seg.2	Seg.3	Seg.4	T. Giro	km/h	Local Time
1							14:31'06.813
2	51.357	46.558	40.842	22.244	2'41.001P	139,5	14:33'47.814
3	29.728	42.975	34.519	20.803	2'08.025	184,9	14:35'55.839
4	24.588	37.802	33.105	20.450	1'55.945	238,9	14:37'51.784
5	23.925	37.342	32.919	20.253	1'54.439	243,8	14:39'46.223
6	24.057	37.867	33.093	2'09.468	3'44.485P	244,9	14:43'30.708
7	1'31.140	37.809	32.544	20.201	3'01.694CP	91,9	14:46'32.402
8	24.113	37.314	32.264	20.173	1'53.864C	243,2	14:48'26.266
9	23.752	37.421	33.813	20.180	1'55.166	244,9	14:50'21.432
10	<b>23.717</b>	<b>37.160</b>	32.770	20.519	1'54.166	<b>246,6</b>	14:52'15.598
11	25.676	1'10.856	1'03.874	44.856	3'25.262	244,3	14:55'40.860
12	54.548	40.524	32.766	20.214	2'28.052	81,3	14:58'08.912
13	23.825	37.287	<b>32.433</b>	<b>20.044</b>	<b>1'53.589</b>	243,8	15:00'02.501

**40 R. ANTTI (1'53.967)**

Giro	Seg.1	Seg.2	Seg.3	Seg.4	T. Giro	km/h	Local Time
1							14:30'08.399
2	54.218	41.317	35.621	23.429	2'34.585P	157,2	14:32'42.984
3	25.627	39.471	35.428	22.021	2'02.547	242,2	14:34'45.531
4	24.101	39.739	33.247	20.593	1'57.680	242,2	14:36'43.211
5	24.070	37.735	32.387	20.396	1'54.588	242,7	14:38'37.799
6	23.956	37.631	<b>32.298</b>	20.426	1'54.311	244,3	14:40'32.110
7	24.074	37.676	32.446	3'47.846	5'22.042P	244,9	14:45'54.152
8	44.978	39.720	32.795	20.695	2'18.188CP	129,8	14:48'12.340
9	23.989	37.581	32.327	20.533	1'54.430C	240,5	14:50'06.770
10	24.042	<b>37.348</b>	32.311	<b>20.266</b>	<b>1'53.967</b>	243,8	14:52'00.737
11	24.254	41.985	1'00.106	42.766	2'49.111	243,8	14:54'49.848
12	54.160	1'04.932	34.815	23.764	2'57.671	78,0	14:57'47.519
13	24.040	37.483	32.367	20.322	1'54.212	243,8	14:59'41.731
14	<b>23.737</b>	38.055	32.982	20.396	1'55.170	<b>245,5</b>	15:01'36.901

**33 H. CHIRIGUT (1'57.799)**

Giro	Seg.1	Seg.2	Seg.3	Seg.4	T. Giro	km/h	Local Time
1		48.932	37.703	43.515		147,9	14:33'13.249
2	1'53.536	41.979	36.184	21.884	3'33.583P	157,2	14:36'46.832
3	27.110	41.765	34.816	38.942	2'22.633P	204,2	14:39'09.465
4	1'00.705	40.732	34.376	21.103	2'36.916P	143,0	14:41'46.381
5	25.006	39.875	33.966	21.111	1'59.958	240,0	14:43'46.339
6	24.898	40.175	34.380	20.874	2'00.327	236,8	14:45'46.666
7	25.006	39.937	34.839	20.884	2'00.666	240,5	14:47'47.332
8	24.715	39.778	35.562	21.713	2'01.768	<b>243,8</b>	14:49'49.100
9	<b>24.447</b>	<b>39.106</b>	<b>33.518</b>	<b>20.728</b>	<b>1'57.799</b>	243,2	14:51'46.899
10	45.881	52.360	1'00.776	44.282	3'23.299P	242,2	14:55'10.198

**41 V. FERNANDEZ (1'57.078)**

Giro	Seg.1	Seg.2	Seg.3	Seg.4	T. Giro	km/h	Local Time
1							14:30'26.246
2	46.114	43.561	36.401	21.836	2'27.912P	149,6	14:32'54.158
3	25.576	40.730	35.168	1'36.981	3'18.455P	239,5	14:36'12.613
4	42.099	40.621	35.610	20.567	2'18.897P	158,1	14:38'31.510
5	<b>24.585</b>	39.702	33.311	22.784	2'00.382	<b>244,3</b>	14:40'31.892
6	24.662	38.454	33.364	20.598	<b>1'57.078</b>	243,2	14:42'28.970
7	37.905	41.690	33.768	20.757	2'14.120	<b>244,3</b>	14:44'43.090
8	24.749	<b>38.400</b>	34.410	1'37.053	3'14.612P	242,7	14:47'57.702
9	41.409	39.817	33.478	21.052	2'15.756P	148,6	14:50'13.458
10	24.904	38.415	<b>32.919</b>	22.977	1'59.215	234,8	14:52'12.673
11	26.529	1'02.740	58.587	1'43.421	4'11.277P	241,6	14:56'23.950
12	41.133	39.588	34.308	20.802	2'15.831P	151,7	14:58'39.781
13	25.833	39.493	32.979	<b>20.545</b>	1'58.850	243,2	15:00'38.631

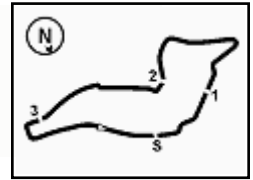
**34 . 'SCAMA 34' (1'54.938)**

Giro	Seg.1	Seg.2	Seg.3	Seg.4	T. Giro	km/h	Local Time
1							14:30'32.139

21/04/2023

P = Box In/Out - C = Tempo Invalidato





Imola Circuit 4.909 m

**4 / 6**

## ACI Racing Weekend Imola, 22-23 Aprile 2023

### TCR Italy - Analisi Tempi Prove Libere 2

**44 M. IMBERTI (1'53.456)**

Giro	Seg.1	Seg.2	Seg.3	Seg.4	T. Giro	km/h	Local Time
1							14:31'08.469
2	48.552	43.467	40.778	2'25.098	4'37.895P	151,5	14:35'46.364
3	41.461	38.997	32.984	20.317	2'13.759CP	163,9	14:38'00.123
4	23.784	37.356	<b>32.162</b>	<b>20.154</b>	<b>1'53.456</b>	243,2	14:39'53.579
5	<b>23.644</b>	39.056	34.931	4'01.137	5'38.768CP	244,3	14:45'32.347
6	41.918	39.227	34.728	24.379	2'20.252P	162,4	14:47'52.599
7	24.302	37.969	32.533	20.886	1'55.690	241,6	14:49'48.289
8	23.670	37.493	32.472	20.547	1'54.182	244,9	14:51'42.471
9	24.552	40.657	1'00.149	3'26.382	5'31.740P	<b>246,0</b>	14:57'14.211
10	39.477	38.016	32.443	20.217	2'10.153P	156,7	14:59'24.364
11	23.659	<b>37.134</b>	32.392	20.201	1'53.386C	243,8	15:01'17.750

13	23.631	37.221	35.606	20.939	1'57.397	246,6	14:59'03.754
14	23.384	37.228	32.640	20.055	1'53.307	<b>251,2</b>	15:00'57.061

**69 F. RAFFAELE (1'53.107)**

Giro	Seg.1	Seg.2	Seg.3	Seg.4	T. Giro	km/h	Local Time
1							14:31'01.923
2	46.319	41.375	35.626	21.178	2'24.498P	143,0	14:33'26.421
3	24.967	39.007	33.525	2'10.684	3'48.183P	245,5	14:37'14.604
4	1'03.923	39.411	32.845	20.530	2'36.709P	134,7	14:39'51.313
5	23.994	38.116	33.460	20.230	1'55.800	248,3	14:41'47.113
6	24.530	39.831	41.974	20.573	2'06.908	250,0	14:43'54.021
7	23.893	37.431	32.326	1'50.064	3'23.714P	248,3	14:47'17.735
8	39.673	40.252	35.676	20.151	2'15.752P	161,7	14:49'33.487
9	23.745	37.495	32.093	<b>20.071</b>	1'53.404	250,0	14:51'26.891
10	<b>23.560</b>	<b>36.803</b>	51.499	39.866	2'31.728	<b>250,6</b>	14:53'58.619
11	55.136	1'12.171	57.710	22.726	3'27.743	84,6	14:57'26.362
12	23.779	37.371	32.279	20.101	1'53.530	247,1	14:59'19.892
13	23.692	37.219	<b>32.034</b>	20.162	<b>1'53.107</b>	249,4	15:01'12.999

**48 N. NATALONI (1'57.048)**

Giro	Seg.1	Seg.2	Seg.3	Seg.4	T. Giro	km/h	Local Time
1							14:30'19.499
2	52.127	45.398	38.577	22.268	2'38.370P	128,6	14:32'57.869
3	25.868	40.497	34.888	21.197	2'02.450	227,8	14:35'00.319
4	25.377	41.066	34.836	21.225	2'02.504	240,0	14:37'02.823
5	25.273	42.856	36.087	20.846	2'05.062	240,0	14:39'07.885
6	25.100	39.250	34.756	20.614	1'59.720	227,8	14:41'07.605
7	25.015	40.616	34.169	20.753	2'00.553	243,8	14:43'08.158
8	24.932	39.366	<b>33.393</b>	20.561	1'58.252	241,6	14:45'06.410
9	24.686	39.115	33.954	20.681	1'58.436	243,8	14:47'04.846
10	24.679	38.692	33.648	20.659	1'57.678	243,8	14:49'02.524
11	24.481	38.419	33.568	20.580	<b>1'57.048</b>	242,7	14:50'59.572
12	24.689	<b>38.333</b>	34.098	1'53.726	3'30.846P	244,3	14:54'30.418
13	1'06.947	1'07.898	36.711	21.267	3'12.823P	77,8	14:57'43.241
14	24.683	38.641	33.470	<b>20.409</b>	1'57.203	242,2	14:59'40.444
15	<b>24.229</b>	39.928	34.938	20.831	1'59.926	<b>246,6</b>	15:01'40.370

**72 F. GIROLAMI (1'50.716)**

Giro	Seg.1	Seg.2	Seg.3	Seg.4	T. Giro	km/h	Local Time
1							14:31'00.270
2	46.470	40.636	35.079	2'17.997	4'20.182P	136,4	14:35'20.452
3	46.763	39.235	32.772	20.172	2'18.942P	163,9	14:37'39.394
4	23.151	36.758	31.736	19.700	1'51.345	248,8	14:39'30.739
5	25.971	41.593	33.354	20.160	2'01.078	<b>252,9</b>	14:41'31.817
6	23.148	<b>36.461</b>	31.628	19.739	1'50.976C	249,4	14:43'22.793
7	23.116	40.349	37.657	2'12.765	3'53.887P	249,4	14:47'16.680
8	39.984	40.268	35.745	19.977	2'15.974P	149,8	14:49'32.654
9	<b>23.061</b>	36.510	<b>31.474</b>	<b>19.671</b>	<b>1'50.716</b>	249,4	14:51'23.370
10	25.721	44.095	1'02.344	2'04.536	4'16.696P	250,6	14:55'40.066
11	1'08.435	53.041	57.151	24.226	3'22.853P	72,5	14:59'02.919

**64 L. LOSONCZY (1'53.181)**

Giro	Seg.1	Seg.2	Seg.3	Seg.4	T. Giro	km/h	Local Time
1							14:30'30.085
2	46.174	40.276	36.642	2'19.214	4'22.306P	145,4	14:34'52.391
3	42.939	37.735	32.343	20.313	2'13.330P	160,0	14:37'05.721
4	23.490	37.626	32.341	20.261	1'53.718	244,9	14:38'59.439
5	<b>23.473</b>	37.149	32.268	20.377	1'53.267C	243,2	14:40'52.706
6	23.560	37.160	<b>32.053</b>	1'29.322	3'02.095P	242,2	14:43'54.801
7	46.859	38.170	33.398	20.561	2'18.988P	118,9	14:46'13.789
8	23.741	37.055	32.318	20.266	1'53.380C	242,2	14:48'07.169
9	25.422	38.523	32.209	20.563	1'56.717	244,9	14:50'03.886
10	23.492	37.288	33.721	2'05.101	3'39.602P	243,8	14:53'43.488
11	58.459	1'07.933	54.017	20.661	3'21.070P	81,9	14:57'04.558
12	24.006	37.306	38.336	20.476	2'00.124	241,6	14:59'04.682
13	23.680	<b>36.965</b>	32.278	<b>20.258</b>	<b>1'53.181</b>	<b>245,5</b>	15:00'57.863

**73 G. MANOLIO (1'58.592)**

Giro	Seg.1	Seg.2	Seg.3	Seg.4	T. Giro	km/h	Local Time
1							14:30'56.460
2	52.948	48.123	40.913	22.752	2'44.736P	129,2	14:33'41.196
3	29.984	45.327	38.050	23.694	2'17.055	186,2	14:35'58.251
4	26.527	41.716	35.688	3'39.368	5'23.299P	208,5	14:41'21.550
5	45.665	42.218	34.565	21.226	2'23.674P	139,2	14:43'45.224
6	25.106	39.626	<b>33.657</b>	20.797	1'59.186	232,3	14:45'44.410
7	25.294	40.053	34.894	20.823	2'01.064	234,3	14:47'45.474
8	24.712	39.330	34.050	<b>20.500</b>	<b>1'58.592</b>	241,1	14:49'44.066
9	24.590	<b>39.236</b>	34.145	20.826	1'58.797	<b>243,8</b>	14:51'42.863
10	24.775	41.337	59.979	36.577	2'42.668	238,4	14:54'25.531
11	53.839	1'09.126	41.596	21.618	3'06.179	83,3	14:57'31.710
12	25.130	40.276	34.819	20.671	2'00.896	237,9	14:59'32.606
13	<b>24.544</b>	39.902	34.000	20.892	1'59.338	240,5	15:01'31.944

**67 M. PELLEGRINI (1'52.862)**

Giro	Seg.1	Seg.2	Seg.3	Seg.4	T. Giro	km/h	Local Time
1							14:31'12.794
2	47.968	43.599	37.362	21.232	2'30.161P	132,8	14:33'42.955
3	25.817	38.565	32.614	20.284	1'57.280	240,0	14:35'40.235
4	24.153	37.479	32.471	20.030	1'54.133	246,0	14:37'34.368
5	24.265	37.956	33.178	20.307	1'55.706	250,6	14:39'30.074
6	24.294	38.307	32.232	20.062	1'54.895	246,6	14:41'24.969
7	23.637	37.431	<b>31.835</b>	<b>19.959</b>	<b>1'52.862</b>	246,6	14:43'17.831
8	23.391	37.253	32.064	20.144	1'52.852C	249,4	14:45'10.683
9	23.651	37.369	33.089	1'49.572	3'23.681P	248,3	14:48'34.364
10	1'13.979	38.423	32.839	20.317	2'45.558P	99,7	14:51'19.922
11	<b>23.324</b>	<b>36.995</b>	45.289	42.536	2'28.144	248,3	14:53'48.066
12	58.488	1'04.983	54.266	20.554	3'18.291	76,8	14:57'06.357

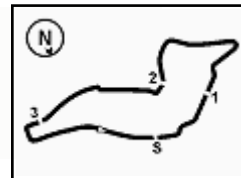
**76 A. COMTE (1'52.561)**

Giro	Seg.1	Seg.2	Seg.3	Seg.4	T. Giro	km/h	Local Time
1							14:30'36.512
2	45.790	45.071	38.975	21.607	2'31.443P	129,3	14:33'07.955
3	26.298	40.573	36.813	20.772	2'04.456	210,1	14:35'12.411
4	25.478	38.294	35.951	2'04.830	3'44.553P	240,5	14:38'56.964
5	39.257	37.576	32.239	20.272	2'09.344P	160,7	14:41'06.308
6	23.673	37.129	32.185	20.218	1'53.205	242,2	14:42'59.513
7	23.661	37.064	32.173	<b>20.004</b>	1'52.902	243,8	14:44'52.415
8	23.625	36.843	31.955	20.138	<b>1'52.561</b>	243,8	14:46'44.976
9	<b>23.524</b>	37.179	33.896	1'58.964	3'33.563P	243,2	14:50'18.539
10	41.673	40.041	33.106	20.442	2'15.262P	162,7	14:52'33.801
11	33.670	1'01.176	1'11.954	34.491	3'21.291	196,0	14:55'55.092
12	47.395	39.322	33.702	20.123	2'20.542	94,0	14:58'15.634

21/04/2023

P = Box In/Out - C = Tempo Invalidato




**ACI Racing Weekend Imola, 22-23 Aprile 2023**
**TCR Italy - Analisi Tempi Prove Libere 2**

77 S. PUSSIER (1'53.433)								89 N. LOIA (1'58.466)							
Giro	Seg.1	Seg.2	Seg.3	Seg.4	T. Giro	km/h	Local Time	Giro	Seg.1	Seg.2	Seg.3	Seg.4	T. Giro	km/h	Local Time
1							14:30'33.765	1							14:30'58.474
2	47.156	42.297	35.562	2'20.307	4'25.322P	142,5	14:34'59.087	2	53.206	47.695	41.211	22.854	2'44.966P	127,5	14:33'43.440
3	41.515	39.213	36.756	20.691	2'18.175P	153,0	14:37'17.262	3	30.223	43.275	38.048	22.760	2'14.306	179,4	14:35'57.746
4	24.218	37.854	33.018	20.592	1'55.682	243,2	14:39'12.944	4	25.440	39.830	33.894	20.902	2'00.066	231,8	14:37'57.812
5	24.426	37.771	32.610	20.387	1'55.194	240,0	14:41'08.138	5	25.000	39.305	34.266	<b>20.899</b>	1'59.470	232,8	14:39'57.282
6	24.645	37.937	32.667	20.360	1'55.609	<b>243,8</b>	14:43'03.747	6	24.924	38.884	33.837	20.820	1'58.465C	232,8	14:41'55.747
7	23.845	39.871	36.043	20.446	2'00.205	242,7	14:45'03.952	7	25.072	39.149	34.370	1'51.941	3'30.532P	233,3	14:45'26.279
8	24.005	37.481	33.241	<b>20.169</b>	1'54.896	242,2	14:46'58.848	8	42.751	40.115	34.840	21.522	2'19.228P	151,3	14:47'45.507
9	23.704	<b>37.199</b>	<b>32.357</b>	20.173	<b>1'53.433</b>	242,7	14:48'52.281	9	25.456	41.616	36.558	23.291	2'06.921	231,8	14:49'52.428
10	25.138	40.020	35.658	1'48.632	3'29.448P	241,6	14:52'21.729	10	30.136	44.138	34.464	20.993	2'09.731	199,6	14:52'02.159
11	53.072	1'07.732	1'01.062	39.853	3'41.719P	138,1	14:56'03.448	11	25.156	54.873	1'00.013	37.615	2'57.657	<b>234,8</b>	14:54'59.816
12	45.593	44.577	37.450	20.960	2'28.580	77,9	14:58'32.028	12	54.124	1'00.304	34.508	21.880	2'50.816	85,6	14:57'50.632
13	<b>23.673</b>	38.733	33.728	20.588	1'56.722	<b>243,8</b>	15:00'28.750	13	<b>24.761</b>	38.973	<b>33.756</b>	20.976	<b>1'58.466</b>	<b>234,8</b>	14:59'49.098
								14	25.080	<b>38.677</b>	33.804	23.424	2'00.985	234,3	15:01'50.083

80 F. BARBERI (1'57.813)								90 M. TRENTIN (1'57.537)							
Giro	Seg.1	Seg.2	Seg.3	Seg.4	T. Giro	km/h	Local Time	Giro	Seg.1	Seg.2	Seg.3	Seg.4	T. Giro	km/h	Local Time
1							14:31'04.016	1							14:30'49.326
2	48.168	46.287	41.018	1'54.800	4'10.273P	140,4	14:35'14.289	2	48.138	44.944	38.697	23.209	2'34.988P	151,5	14:33'24.314
3	54.042	40.797	34.294	21.687	2'30.820P	152,1	14:37'45.109	3	27.516	41.528	35.716	21.421	2'06.181	234,3	14:35'30.495
4	25.899	39.794	35.003	22.286	2'02.982	212,2	14:39'48.091	4	25.263	39.221	34.134	21.134	1'59.752	235,3	14:37'30.247
5	25.256	40.153	35.275	21.979	2'02.663C	233,8	14:41'50.754	5	24.943	39.311	33.662	20.827	1'58.743	237,4	14:39'28.990
6	25.341	39.531	34.854	1'41.940	3'21.666P	229,3	14:45'12.420	6	30.682	51.842	46.848	21.395	2'30.767	235,3	14:41'59.757
7	46.614	42.788	39.317	21.450	2'30.169P	146,5	14:47'42.589	7	25.193	46.030	35.597	21.655	2'08.475	237,9	14:44'08.232
8	25.476	39.278	34.925	21.031	2'00.710	235,8	14:49'43.299	8	25.159	39.914	34.849	20.845	2'00.767	235,8	14:46'08.999
9	<b>24.853</b>	<b>38.607</b>	33.538	20.815	<b>1'57.813</b>	237,4	14:51'41.112	9	24.820	<b>38.518</b>	33.423	<b>20.776</b>	<b>1'57.537</b>	237,9	14:48'06.536
10	24.994	39.559	59.503	47.355	2'51.411P	237,9	14:54'32.523	10	24.632	38.625	33.446	21.261	1'57.964	237,9	14:50'04.500
11	1'24.821	59.270	34.246	21.129	3'19.466P	81,4	14:57'51.989	11	<b>24.500</b>	39.620	33.796	20.857	1'58.773	240,0	14:52'03.273
12	25.150	39.061	<b>33.262</b>	<b>20.688</b>	1'58.161	236,8	14:59'50.150	12	25.779	54.354	59.840	2'06.367	4'26.340P	<b>241,1</b>	14:56'29.613
13	24.858	38.640	34.646	22.184	2'00.328	<b>238,9</b>	15:01'50.478	13	40.022	40.120	35.558	20.877	2'16.577P	156,7	14:58'46.190
								14	24.584	38.795	<b>33.363</b>	21.503	1'58.245	236,8	15:00'44.435

81 V. DALOKAY (1'57.797)								91 . CIOFFI-CIOFFI (2'00.952)							
Giro	Seg.1	Seg.2	Seg.3	Seg.4	T. Giro	km/h	Local Time	Giro	Seg.1	Seg.2	Seg.3	Seg.4	T. Giro	km/h	Local Time
1							14:31'22.302	1							14:30'28.770
2	50.577	44.398	41.438	22.326	2'38.739P	120,3	14:34'01.041	2	52.939	48.527	39.053	23.720	2'44.239P	135,8	14:33'13.009
3	29.676	42.102	35.918	22.633	2'10.329	205,7	14:36'11.370	3	28.760	43.742	37.192	22.804	2'12.498	199,6	14:35'25.507
4	54.581	55.578	47.992	2'58.773	5'36.924P	243,8	14:41'48.294	4	26.207	41.083	35.070	22.117	2'04.477	230,8	14:37'29.984
5	45.998	42.805	35.906	21.723	2'26.432P	129,0	14:44'14.726	5	26.445	41.667	39.308	22.623	2'10.043	216,0	14:39'40.027
6	26.148	40.326	34.678	21.071	2'02.223	211,8	14:46'16.949	6	25.503	43.607	50.906	3'28.871	5'28.887P	<b>235,8</b>	14:45'08.914
7	25.302	39.262	34.391	20.739	1'59.694	244,3	14:48'16.643	7	46.641	42.590	36.359	21.936	2'27.526P	153,2	14:47'36.440
8	24.619	39.041	34.216	<b>20.582</b>	1'58.458	243,2	14:50'15.101	8	26.096	40.834	35.049	21.624	2'03.603	231,8	14:49'40.043
9	24.639	39.817	35.093	21.830	2'01.379	<b>244,9</b>	14:52'16.480	9	<b>25.457</b>	39.875	<b>34.277</b>	<b>21.343</b>	<b>2'00.952</b>	232,8	14:51'40.995
10	27.344	1'08.891	1'04.128	45.275	3'25.638	241,6	14:55'42.118	10	26.063	42.569	1'03.061	38.005	2'49.698	229,8	14:54'30.693
11	53.914	42.202	36.090	20.883	2'33.089	80,2	14:58'15.207	11	54.856	1'07.980	40.130	22.033	3'04.999	82,4	14:57'35.692
12	<b>24.567</b>	<b>38.909</b>	<b>33.711</b>	20.610	<b>1'57.797</b>	244,3	15:00'13.004	12	25.579	39.964	34.938	21.765	2'02.246	231,3	14:59'37.938
								13	25.666	<b>39.719</b>	34.638	22.093	2'02.116	231,8	15:01'40.054

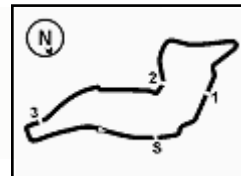
  

88 L. GALLO (1'57.667)								92 C. FEDELI (1'56.627)							
Giro	Seg.1	Seg.2	Seg.3	Seg.4	T. Giro	km/h	Local Time	Giro	Seg.1	Seg.2	Seg.3	Seg.4	T. Giro	km/h	Local Time
1							14:30'46.992	1							14:30'41.406
2	48.978	45.721	38.703	10'49.219	13'02.621P	120,8	14:43'49.613	2	46.552	44.251	39.452	3'16.717	5'26.972P	153,2	14:36'08.378
3	53.987	42.301	36.122	21.470	2'33.880P	106,8	14:46'23.493	3	42.506	40.980	35.168	21.071	2'19.725P	152,5	14:38'28.103
4	25.068	39.323	34.299	20.900	1'59.590	242,7	14:48'23.083	4	24.898	39.382	33.733	21.351	1'59.364	237,9	14:40'27.467
5	24.632	38.825	35.264	20.749	1'59.470	244,3	14:50'22.553	5	24.788	39.243	34.349	21.381	1'59.761	242,7	14:42'27.228
6	24.665	39.312	33.917	20.811	1'58.705	<b>247,1</b>	14:52'21.258	6	24.357	38.358	<b>33.653</b>	<b>20.427</b>	1'56.795	238,4	14:44'24.023
7	25.941	1'08.811	1'03.442	2'02.026	4'40.220P	246,0	14:57'01.478	7	<b>24.195</b>	<b>38.263</b>	<b>33.692</b>	<b>20.477</b>	<b>1'56.627</b>	234,8	14:46'20.650
8	43.108	42.075	38.803	20.975	2'24.961P	147,1	14:59'26.439	8	24.706	40.704	37.686	1'58.127	3'41.223P	<b>243,8</b>	14:50'01.873
9	<b>24.608</b>	<b>38.745</b>	<b>33.773</b>	<b>20.541</b>	<b>1'57.667</b>	243,2	15:01'24.106	9	43.055	40.219	34.438	20.694	2'18.406P	139,9	14:52'20.279
								10	25.988	1'08.186	1'03.650	44.980	3'22.804	232,8	14:55'43.083
								11	55.605	40.798	37.153	21.011	2'34.567	80,7	14:58'17.650

21/04/2023

P = Box In/Out - C = Tempo Invalidato





12 24.398 39.456 37.061 20.686 2'01.601 239,5 15:00'19.251

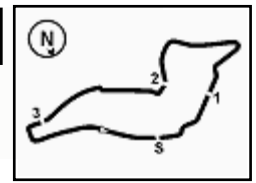
**96 P. PALANTI (1'56.276)**

Giro	Seg.1	Seg.2	Seg.3	Seg.4	T. Giro	km/h	Local Time
1							14:31'16.298
2	49.091	44.177	38.003	22.282	2'33.553P	130,3	14:33'49.851
3	27.577	42.447	37.929	2'03.210	3'51.163P	209,3	14:37'41.014
4	1'06.467	40.477	36.703	21.739	2'45.386P	130,4	14:40'26.400
5	25.248	47.077	35.367	21.178	2'08.870	225,9	14:42'35.270
6	24.736	38.432	33.445	<b>20.690</b>	1'57.303	238,9	14:44'32.573
7	<b>24.251</b>	<b>38.144</b>	<b>33.141</b>	20.740	<b>1'56.276</b>	<b>240,0</b>	14:46'28.849
8	30.761	45.301	43.496	3'26.311	5'25.869P	237,9	14:51'54.718
9	1'33.937	1'08.773	1'02.893	48.529	4'34.132P	104,3	14:56'28.850
10	37.791	40.827	42.746	22.177	2'23.541	138,8	14:58'52.391
11	24.766	40.846	42.059	21.998	2'09.669	<b>240,0</b>	15:01'02.060

**99 S. DE VECCHI (2'06.458)**

Giro	Seg.1	Seg.2	Seg.3	Seg.4	T. Giro	km/h	Local Time
1							14:31'19.811
2	58.370	59.157	43.509	24.872	3'05.908P	108,7	14:34'25.719
3	33.439	56.446	38.562	23.191	2'31.638	162,7	14:36'57.357
4	27.675	49.992	39.294	3'24.504	5'21.465P	220,0	14:42'18.822
5	1'07.908	49.683	37.947	22.537	2'58.075P	99,9	14:45'16.897
6	27.191	49.320	38.963	22.143	2'17.617	223,1	14:47'34.514
7	26.578	41.491	<b>35.052</b>	36.305	2'19.426	<b>232,3</b>	14:49'53.940
8	28.417	50.911	57.438	22.678	2'39.444	209,3	14:52'33.384
9	33.329	1'00.724	1'02.878	38.995	3'15.926	216,0	14:55'49.310
10	54.141	44.919	35.993	22.079	2'37.132	91,1	14:58'26.442
11	<b>26.316</b>	<b>40.981</b>	37.177	<b>21.984</b>	<b>2'06.458</b>	230,3	15:00'32.900





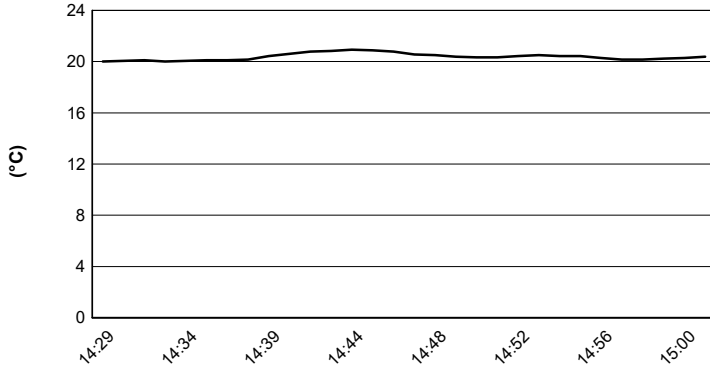
Imola Circuit 4.909 m

**ACI Racing Weekend Imola, 22-23 Aprile 2023**

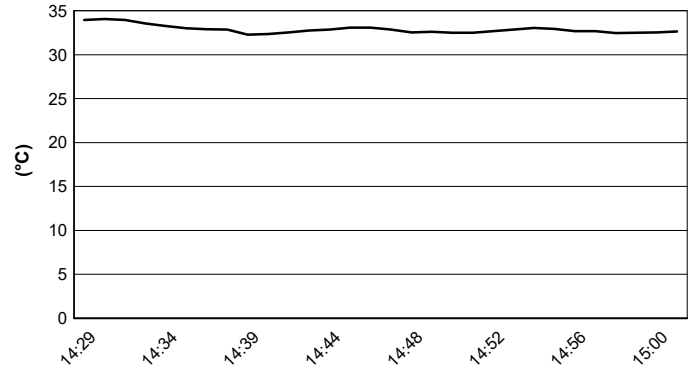
**TCR Italy - Meteo Prove Libere 2**

Session started 14:30 - Session ended 15:02

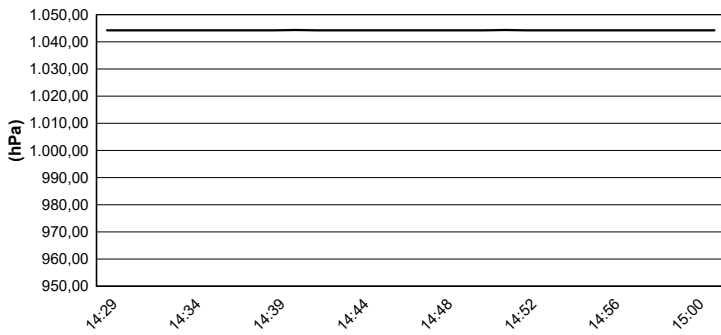
**Air Temperature**



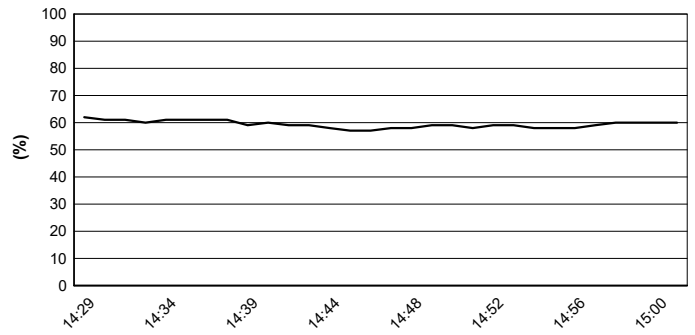
**Track Temperature**



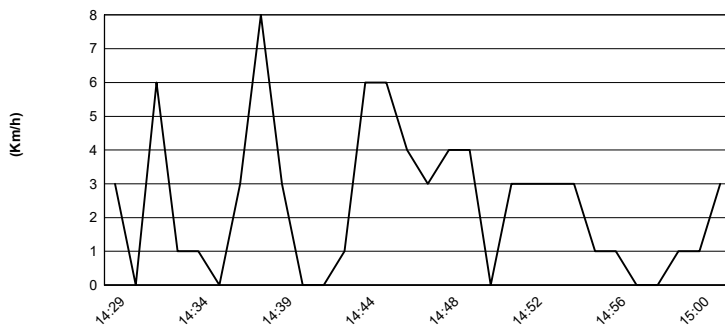
**Air Pressure**



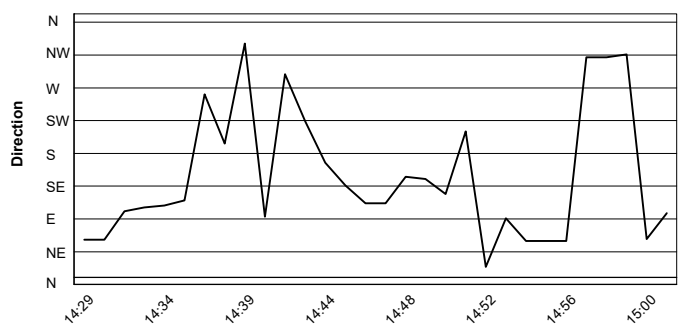
**Humidity**



**Wind Speed**



**Wind Direction**



21/04/2023

